



Junior 36

Parts Guide

2018 & Newer



Contents

- Main Frame Assembly.....3
- Motion Control Assembly.....5
- Park Brake Assembly.....7
- Tire and Wheel Assembly.....8
- Spray System Assembly.....10
- Right Tank Assembly.....12
- Left Tank Assembly.....13
- Manifold Assembly14
- Liquid Valve Assembly.....15
- Spray Boom Assembly.....16
- Spreader Assembly.....17
- Fuel Assembly.....19
- Engine Assembly.....20
- Hydraulic Assembly.....21

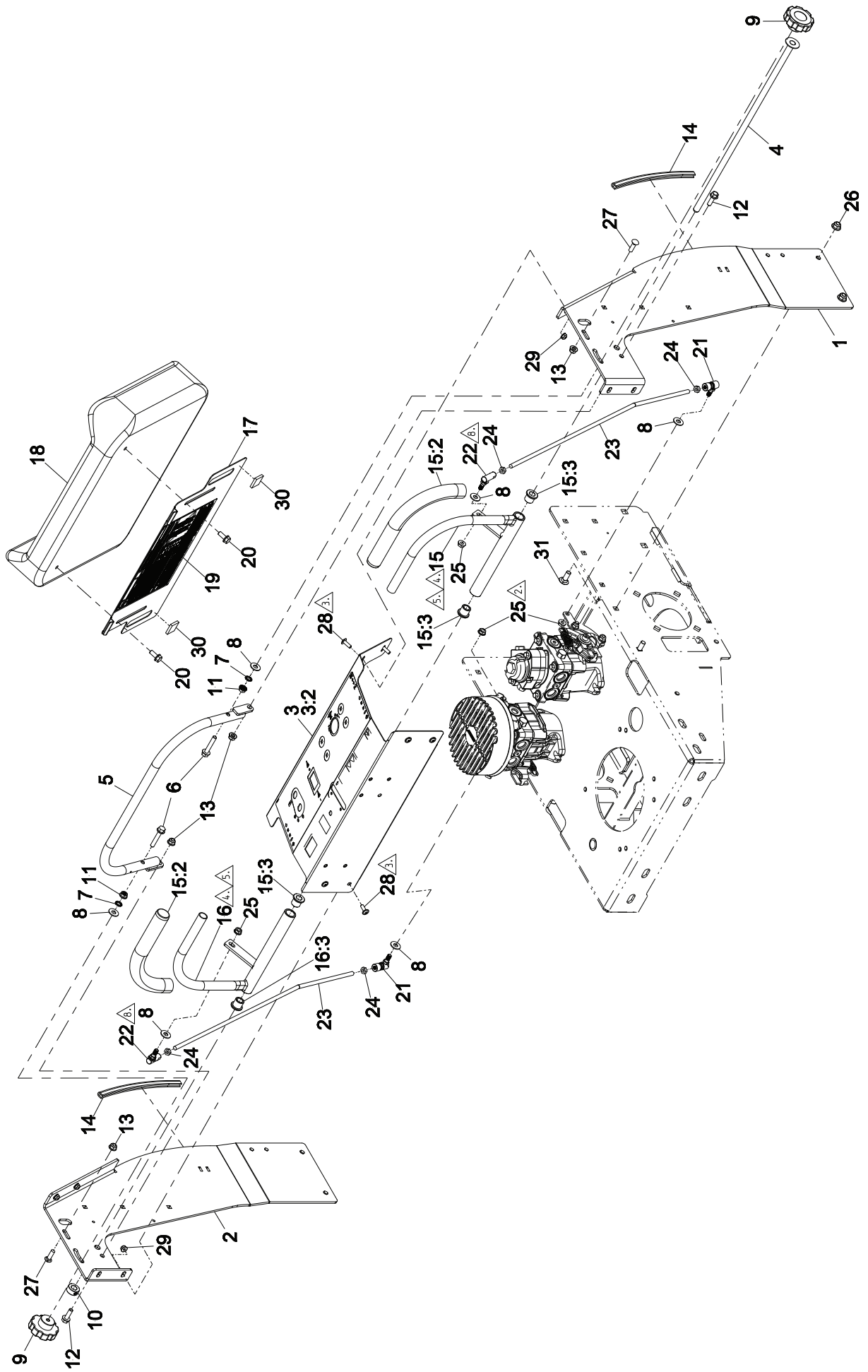
FRAME

ITEM	PART NUMBER	DESCRIPTION	QTY
1	142-0773	WLD, FRAME, MAIN, JR36	1
2	142-0778	WLD, FRONT FRAME, JR36 24 GALLON UNIT	1
3	142-0781	TRAY, JR36 BATTERY	1
4	135-5493	STRAP-BATTERY	2
5	135-5494	BRACKET, LOWER CABLE	1
6	135-5195	WING-CAPTURE, RT [WELD]	1
7	135-5194	WING-CAPTURE, LT [WELD]	1
8	142-0806	WLD, CAPTURE, T-BAR, JR36	1
9	135-5654	SPRING-COMPRESSION	3
10	135-6805	PLATE-FOOT [W/GRIP PAD]	1
11	142-1923	WLD, FOOT PEDAL, LCS	1
12	135-5652	SPRING-EXTENSION	4
13	302-63	ZERK	2
14	135-5644	CABLE-CASTER, LOCK	1
15	1126	WASHER-FLAT	3
16	107-0279	WASHER [.350 ID X.750 OD X.054 THK SS]	2
17	HDW 17294	BOLT,CARRIAGE,5/16-18X1,ST/ST 18-8	2
18	126-0710	SCREW-HH [3/8-16X1.75, SS]	1
19	126-0759	WASHER-FLAT [.218 x.437 x.051, SS]	2
20	135-6208	SCREW-HHF [3/8-16 X 1.0, SER FLG, SS]	4
21	135-6806	NUT-HEX FLANGE [3/8-16, SERRATED, SS]	3
22	135-5682	BALL JOINT-SS [10-32]	2
23	135-6284	PIN-HAIR COTTER	2
24	135-6109	NUT-HEX FLANGE [5/16-18, NYLOC, SS]	8
25	135-6110	NUT-HEX FLANGE [3/8-16, NYLOC, SS]	15
26	135-6278	SCREW-HHF [3/8-16 X 1.50, SER FLG, SS]	2
27	126-3875	WASHER [.406X1.25X.194, SS]	2
28	135-6111	NUT-HEX FLANGE [1/2-13, NYLOC, SS]	8
29	135-6207	SCREW-HHF [1/2-13 X 1-1/4, SER FLG, SS]	8
30	135-6217	SCREW-HH [5/16-18 X 3.50, SS]	1
31	135-6218	SCREW-HH [5/16-18 X 4.0, SS]	1
32	135-6222	SCREW-HHF [5/16-18 X 3.00, SER FLG, SS]	2
33	HDW 05856	NUT,NYL INS,#10-32,ST/ST 18-8	2
34	142-0775	WLD, MOUNT, FERT BOX, L, JR36	1
35	142-0777	WLD, MOUNT, FERT BOX, R, JR36	1
36	126-0980	SCREW-CARR [3/8-16X1.00, SS]	8
37	135-6728	DECAL-SPRAY FOOT BUTTON	1
38	135-6430	DECAL-CASTER LOCK[ZSPRAY]	1
39	520-0019	NUT,HEX JAM MCH SCR,10-32,SST	2
40	142-0744	GUARD, MUFFLER, JR36	1
41	126-2712	SCREW-HHF [5/16-18X.75, SS]	2

NOTE(S):

2. INSTALL CABLE ITEM 14 ACROSS FRAME AND SECURE TO ITEM 2 AND ITEM 5
3. TORQUE TO 43±4 FT-LBS (8X).
4. ITEMS 6, 7, 8, 10, 11 SHOULD PIVOT FREELY AFTER ASSEMBLED.

MOTION CONTROL



MOTION CONTROL

ITEM	PART NUMBER	DESCRIPTION	QTY
1	142-0688	UPRIGHT, L, JR36, SS, 0.188	1
2	142-0689	UPRIGHT, L, JR36, SS, 0.188	1
3	135-6838	PANEL-CONTROL [W/DECAL]	1
4	135-5430	ROD-PIVOT, JOY STICK [WELD]	1
5	135-5427	BAR-SPEED [WELD]	1
6	135-5779	SCREW-HHF [5/16-18X1.75, SER FLG, SS]	2
7	135-6286	WASHER-LOCK [5/16 EXT TOOTH, SS]	2
8	HDW 14535	FLAT WASHER, 5/16" NOM,ST/ST,18-8	6
9	135-5689	KNOB-FLUTED [5/16-18 INSERT]	2
10	135-6192	COLLAR [.50" ID]	1
11	118-1722	NUT,HEX FLANGE,5/16-18,SST, RIE2006	2
12	135-6272	SCREW-HHF [5/16-18 X 1.0, SER FLG, SS]	2
13	135-6109	NUT-HEX FLANGE [5/16-18, NYLOC, SS]	4
14	135-7000	STRIP-TRIM, 9.0"	2
15	135-7002	STICK-JOY, LT [W/GRIP & BUSHINGS]	1
16	135-7003	STICK-JOY, RT [W/GRIP & BUSHINGS]	1
17	142-0727	PLATE, KNEE PAD, JR36	1
18	135-5334	PAD-KNEE, Z-SPRAY/Z-PLUG	1
19	135-6281	DECAL-SPRAY CHART[Z-SPRAY]	1
20	126-2712	SCREW-HHF [5/16-18X.75, SS]	2
21	135-5718	BALL JOINT-QUICK DISCONNECT, SS	2
22	135-9812	BALLJOINT-SS [5/16-24]	2
23	135-8626	24.5" JOYSTICK ROD(ABI/JR36)	2
24	107-0282	NUT-HEX [5/16-24, JAM, SS]	4
25	107-0380	NUT-HHF [5/16-24 PATCH LOCK]	4
26	135-6110	NUT-HEX FLANGE [3/8-16, NYLOC, SS]	4
27	HDW 17294	BOLT,CARRIAGE,5/16-18X1,ST/ST 18-8	2
28	135-7080	SCREW-HSBHF [.25-20 X .750, SS]	8
29	135-6108	NUT-HEX FLANGE [1/4-20, NYLOC, SS]	8
30	93-9155	VELCRO	2
31	126-0980	SCREW-CARR [3/8-16X1.00, SS]	4
15:2	1-633257	GRIP-CONTROL, MOTION	2
15:3	135-5694	BUSHING-FLANGE	4

NOTE(S):

1. LOCATE TRIM STRIP (ITEM 14) AND VELCRO (ITEM 30) AS SHOWN.
2. TORQUE TO 236±23 IN-LBS (4X)
3. TORQUE TO 75±7 IN-LBS (8X)
4. ITEMS 15 AND 16 MUST MOVE FREELY AFTER ASSEMBLED.
5. IN NEUTRAL POSITION, ITEMS 15 AND 16 SHOULD ALIGN WITH EACH OTHER.
6. POSITION ITEM 5 IN THE FURTHEST FORWARD POSITION.
7. POSITION ITEM 27 IN THE FURTHEST REARWARD POSITION.
8. BALLJOINTS (ITEM 22) FOR MOTION CONTROL SHOULD BE TIGHTENED IN THE FARTHEST REAR POSITION OF THE SLOT ON ITEMS 15 AND 16.

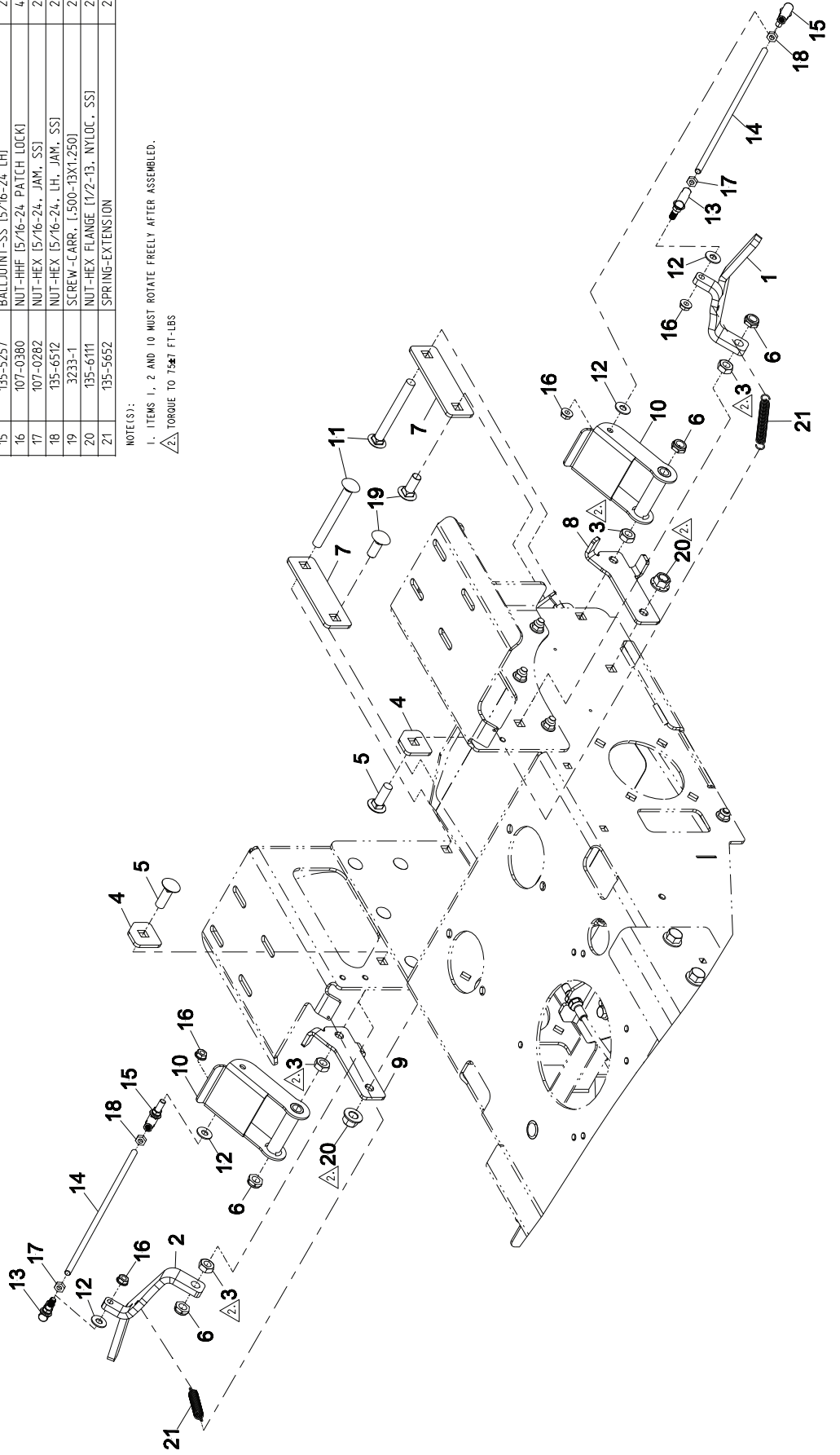
PARK BRAKE, JR36

ITEM	PART NUMBER	DESCRIPTION	QTY
1	142-0703	CHOCK, L. BRAKE, JR36	1
2	142-0704	CHOCK, L. BRAKE, JR36, MS. 0.375	1
3	3218-5	NUT-JAM [500-13.GR2.YZ]	4
4	142-0732	BACKPLATE, BRAKE MOUNT, JR36	2
5	3233-2	SCREW-CARR. [500-13 X 1.50]	2
6	3296-45	NUT-HEX [1/2-13.LT.THIN.NYLOCK.YZ.GR.N2]	4
7	142-0733	BACKPLATE, BRAKE PEDAL, JR36	2
8	142-0730	STOP, FOOT PEDAL, BRAKE, JR36	1
9	142-0731	STOP, JR36 FOOT PEDAL BRAKE	1
10	142-0794	WLD. FOOT PEDAL, BRAKE, JR36	2
11	3233-7	SCREW-CARRIAGE[.50-13 X 4.50]	2
12	HDW 14535	FLAT WASHER, 5/16" NOM.ST/ST.18-8	4
13	135-9812	BALL JOINT-SS [5/16-24]	2
14	135-8635	BRAKE LINKAGE ROD	2
15	135-5257	BALL JOINT-SS [5/16-24 LH]	2
16	107-0380	NUT-HHE [5/16-24 PATCH LOCK]	4
17	107-0282	NUT-HEX [5/16-24, JAM, SS]	2
18	135-6512	NUT-HEX [5/16-24, LH, JAM, SS]	2
19	3233-1	SCREW-CARR. [500-13X1.250]	2
20	135-6111	NUT-HEX FLANGE [1/2-13, NYLOC, SS]	2
21	135-5652	SPRING-EXTENSION	2

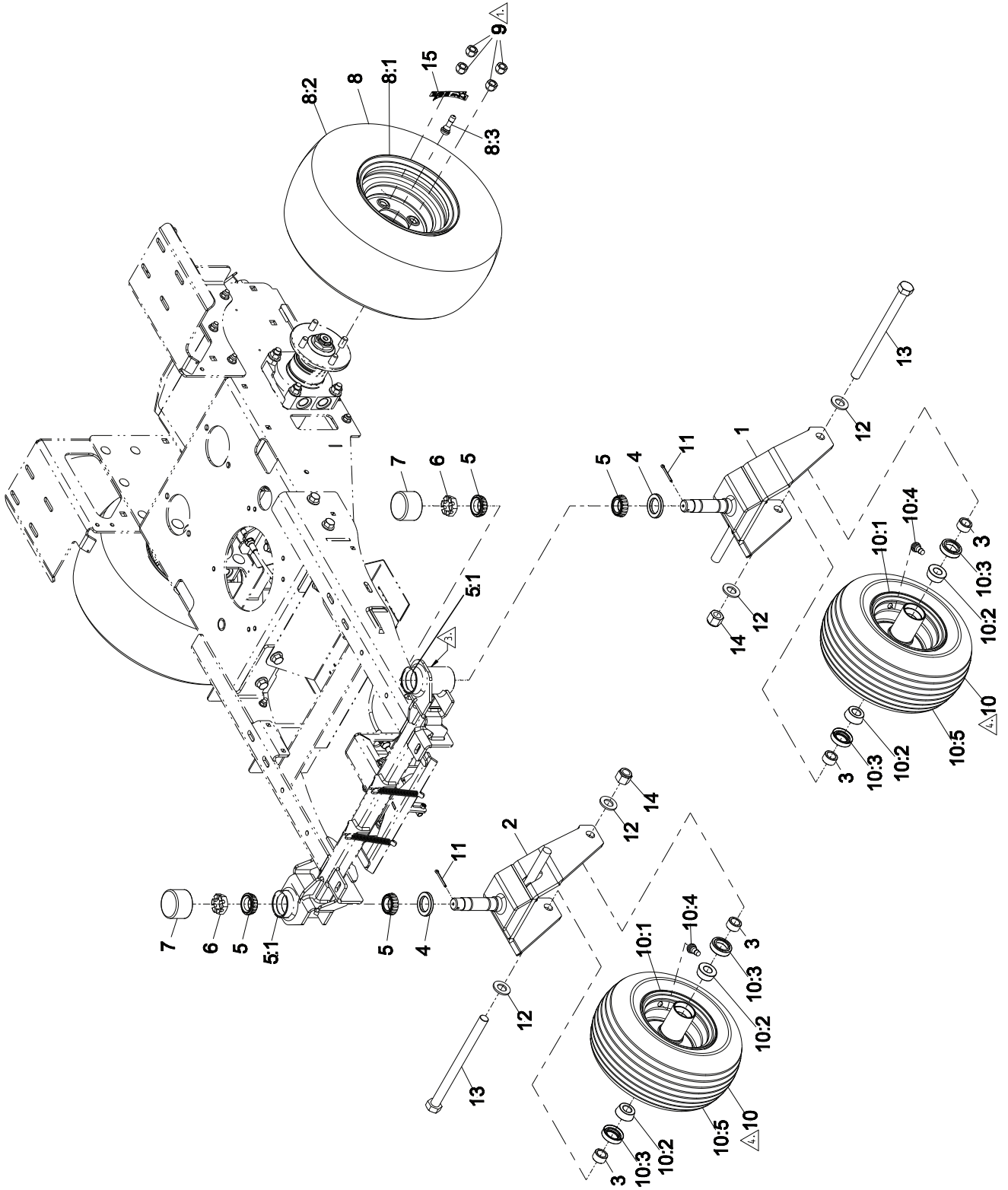
NOTE(S):

1. ITEMS 1, 2 AND 10 MUST ROTATE FREELY AFTER ASSEMBLED.

2. TORQUE TO 75# FT-LBS






WHEELS



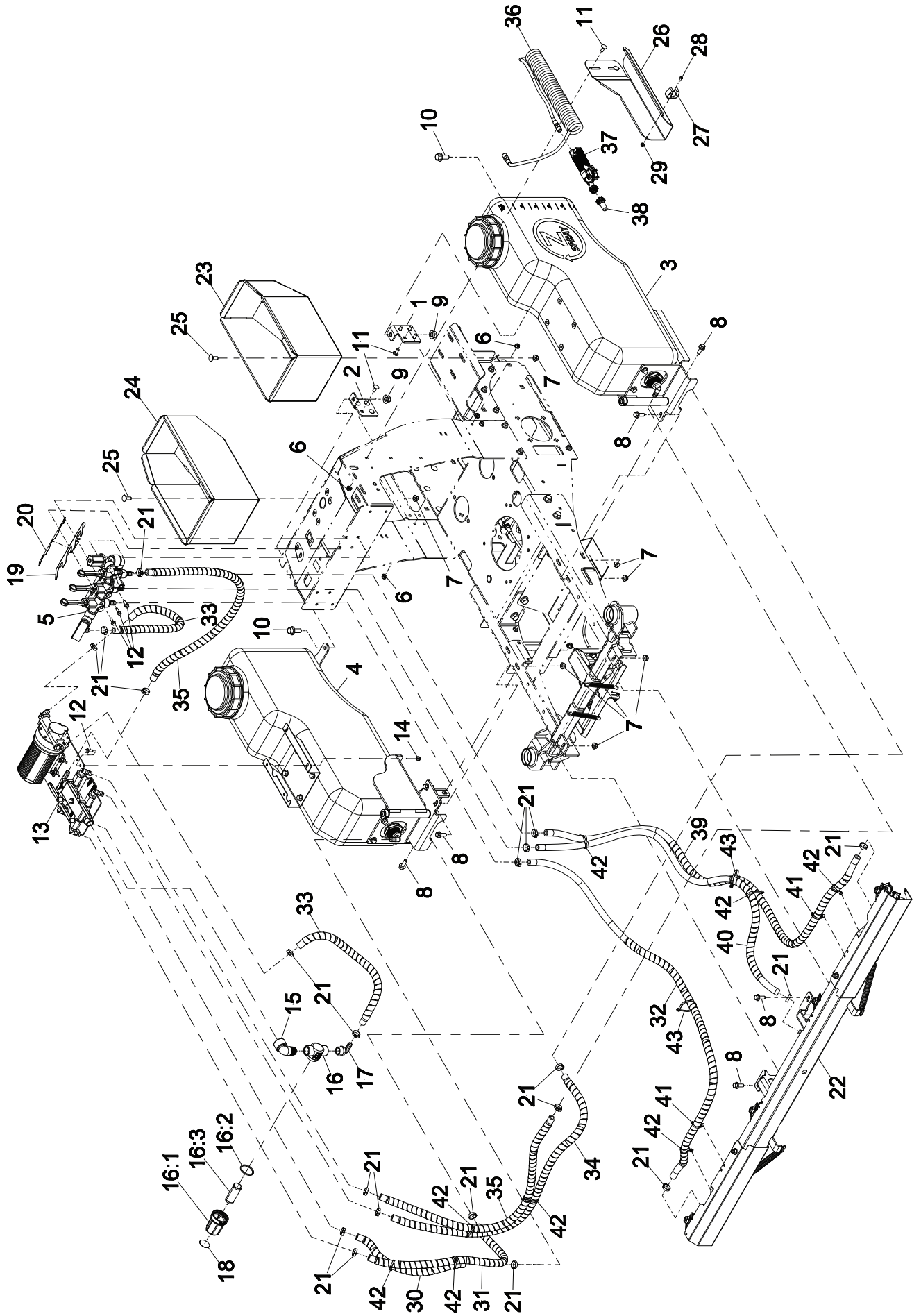
WHEELS

ITEM	PART NUMBER	DESCRIPTION	QTY
1	142-0918	WLD, CASTER, L, JR36, 36R	1
2	142-0919	WLD, CASTER, R, JR36, 36R	1
3	135-5683	SPACER-AXLE	4
4	1-543511	GREASE SEAL 1.25 DIA SHAFT	2
5	254-92	CONE-BEARING, TAPERED	4
6	1-809082	NUT, SLOTTED HEX	2
7	135-5756	CAP-DUST, RUBBER	2
8	135-8621	TIRE/RIM ASM, K500-4H-BLK[18X750-8, JR36]	2
9	242-50	LUG NUT- TAPERED	8
10	135-8615	WHEEL AND TIRE [13 X 6.5-6, BLACK]	2
11	135-6292	PIN-COTTER [5/32 X 1.50, SS]	2
12	3256-28	WASHER-FLAT, .813X1.500	4
13	135-6300	SCREW -HH [3/4-10 X 10.0, GR5, CZ]	2
14	3296-51	NUT-LOCK, .750-10UNJC-3B LIGHT	2
15	126-2055	DECAL-WHEEL HUB [RIDERS]	2
5:1	254-72	BEARING-CUP TAPERED	4
8:1	135-6679	RIM [8 X 5.375]	1
8:2	126-1618	TIRE [18X 7.5 - 5]	1
8:3	232-27	STEM-VALVE	1
10:1	135-6680	RIM [6 X 4.5]	1
10:2	1-633585	BEARING-CONE, TAPER	2
10:3	103-0063	SEAL CSTER	2
10:4	5108	VALVE	1
10:5	135-6681	TIRE-RIB [13 X 6.5]	1

NOTE(S):

1.  TORQUE TO 95±9 FT-LBS. SNUG ALL NUTS IN ALTERNATING PATTERN ON WHEEL. THEN TORQUE IN ALTERNATING PATTERN. (8X)
2. ALL TIRES SET TO 18±2 PSI.
3.  FILL CASTER HUB FULL OF GREASE WHILE TURNING CASTER WELDMENT UNTIL GREASE COMES THROUGH TOP BEARING. (2X)
4.  FILL CASTER TIRE RIM FULL OF GREASE. (2X)

SPRAY



SPRAY

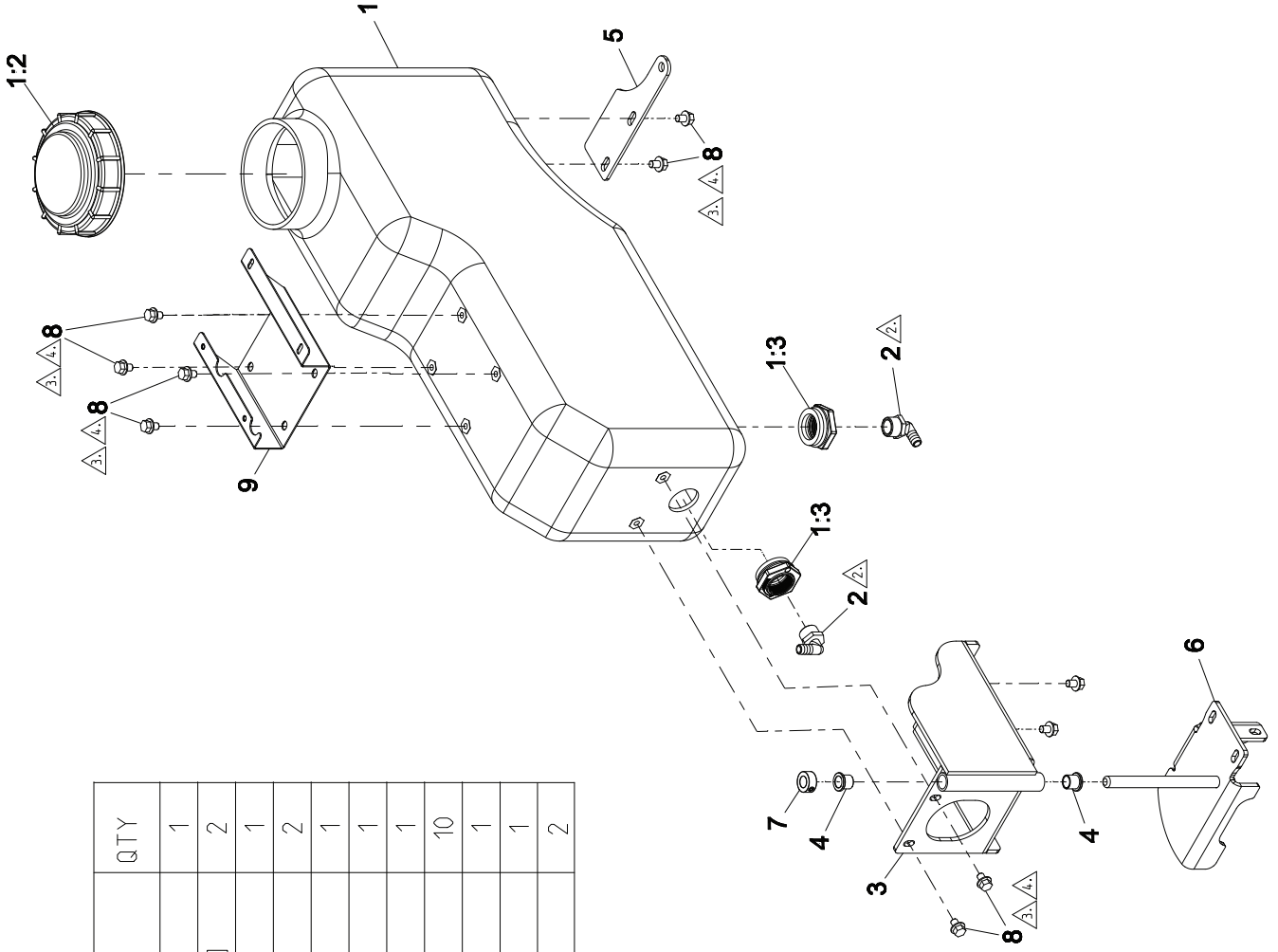
ITEM	PART NUMBER	DESCRIPTION	QTY
1	142-0722	PIN, SUPPORT, JR36	1
2	142-0723	PIN, SUPPORT, JR36, SS, 0.188	1
3	135-6683	ASM-TANK, LT [12 GAL]	1
4	135-6684	ASM-TANK, RT [12 GAL]	1
5	135-6682	ASM-MANIFOLD [JR36]	1
6	135-6109	NUT-HEX FLANGE [5/16-18, NYLOC, SS]	10
7	135-6110	NUT-HEX FLANGE [3/8-16, NYLOC, SS]	16
8	135-6208	SCREW -HHF [3/8-16 X 1.0, SER FLG, SS]	8
9	135-6111	NUT-HEX FLANGE [1/2-13, NYLOC, SS]	2
10	135-6207	SCREW -HHF [1/2-13 X 1-1/4, SER FLG, SS]	2
11	126-0695	SCREW -CARR [5/16-18 X .75, SS]	10
12	135-6221	SCREW -HHF [1/4-20X3/4, SER FLG, SS]	7
13	135-6685	ASM, LIQUID VALVE [JR36]	1
14	135-6108	NUT-HEX FLANGE [1/4-20, NYLOC, SS]	2
15	132-7706	ELBOW -90 DEG, 3/4" NPT	1
16	135-5765	STRAINER-INLINE [3/4 NPT PP-50]	1
17	135-5744	FITTING-ELBOW, 90 [3/4" NPT - 1/2" HB]	1
18	135-6424	DECAL-STRAINER[ZSPRAY]	1
19	135-5570	BRACKET-MANIFOLD	1
20	135-6285	DECAL-SPRAY CONTROL[ZSPRAY]	1
21	135-5692	CLAMP-OETIKER, 167 [22.6MM]	20
22	135-6686	ASM-BOOM [JR36]	1
23	135-5470	BOX-FERT, LT [WELD]	1
24	135-5473	BOX-FERT, RT [WELD]	1
25	126-0980	SCREW -CARR [3/8-16X1.00, SS]	8
26	142-0749	TRAY, GUN, JR36	1
27	135-5661	HOLDER-TOOL, CLIP [BLACK VINYL COATED]	1
28	135-6374	SCREW -HSBH [#10-24 X 1/2, SS]	1
29	135-6342	NUT-HEX FLANGE [10-24, NYLOC, SS]	1
30	142-0042	HOSE-SPRAY, WRAPPED [.50ID X 16]	1
31	142-0039	HOSE-SPRAY, WRAPPED [.50ID X 27]	1
32	142-0014	HOSE-SPRAY, WRAPPED [.50ID X 65]	1
33	142-0041	HOSE-SPRAY, WRAPPED [.50ID X 20]	1
34	142-0036	HOSE-SPRAY, WRAPPED [.50ID X 43]	1
35	142-0037	HOSE-SPRAY, WRAPPED [.50ID X 37]	1
36	135-6612	HOSE-COILED, 15FT [ROUTED]	1
37	135-5773	GUN-SPRAY, SPOT	1
38	135-5778	TIP-SPRAY, #12 SPOT	1
39	142-0013	HOSE-SPRAY, WRAPPED [.50ID X 63]	1
40	135-5294	HOSE-SPRAY, WRAPPED [.50ID X 48]	1
41	32180-030_100	CLIP, FIR TREE W/TIE, 1/4 INCH HOLE	2
42	3290-378	TIE, ZIP	8
43	3290-379	TIE, ZIP	2

NOTE(S):

1. APPLY PIPE SEALANT (135-6568, .03 OZ) TO ALL PIPE THREADS BEFORE INSERTION.
2. TORQUE ALL ITEM 6 (135-6109) TO 132±13 IN-LBS.
3. TORQUE ALL ITEM 7 (135-6110) TO 236±23 IN-LBS.

ASM-TANK, RT [12GAL]

ITEM	PART NUMBER	DESCRIPTION	QTY
1	135-6678	TANK, R, 12 GAL, J36	1
2	135-5744	FITTING-ELBOW, 90 [3/4" NPT - 1/2" HB]	2
3	142-0790	WLD, WING, TANK, BOTTOM, R, JR36	1
4	135-9063	BUSHING-FLANGE [.625 ID]	2
5	142-0724	PLATE,PIVOT LOCK,TANK,JR36	1
6	142-0792	WLD, WING, TANK, BOTTOM, R, JR36	1
7	142-1443	5/8 SHAFT COLLAR	1
8	135-7096	SCREW -HHF [3/8-16 X .50, SER FLG, SS]	10
9	135-6904	PLATFORM-VALVE, LIQUID [WLD]	1
1:2	135-5916	CAP-TANK, SPRAY	1
1:3	126-4393	FITTING-BULKHEAD	2



NOTE(S):

- 2. APPLY PIPE SEALANT TO THREADS BEFORE INSERTION.
- 3. APPLY LOCTITE 505-33 TO THREADS.
- 4. TORQUE TO 143±14 IN-LBS.
- 5. AFTER ASSEMBLED, ITEM 6 SHOULD PIVOT FREELY IN ITEM 3.

ASM-TANK, LT [12 GAL]

ITEM	PART NUMBER	DESCRIPTION	QTY
1	135-6677	TANK, L, 12 GAL, J36	1
2	135-5744	FITTING-ELBOW, 90 [3/4" NPT - 1/2" HB]	2
3	142-0789	WLD, W ING, TANK, BOTTOM, L, JR36	1
4	135-9063	BUSHING-FLANGE [.625 ID]	2
5	135-7096	SCREW -HHF [3/8-16 X .50, SER FLG, SS]	6
6	142-0724	PLATE,PIVOT LOCK,TANK, JR36	1
7	142-0791	WLD, W ING, TANK, BOTTOM, L, JR36	1
8	142-1443	5/8 SHAFT COLLAR	1
1:2	135-5916	CAP-TANK, SPRAY	1
1:3	126-4393	FITTING-BULKHEAD	2

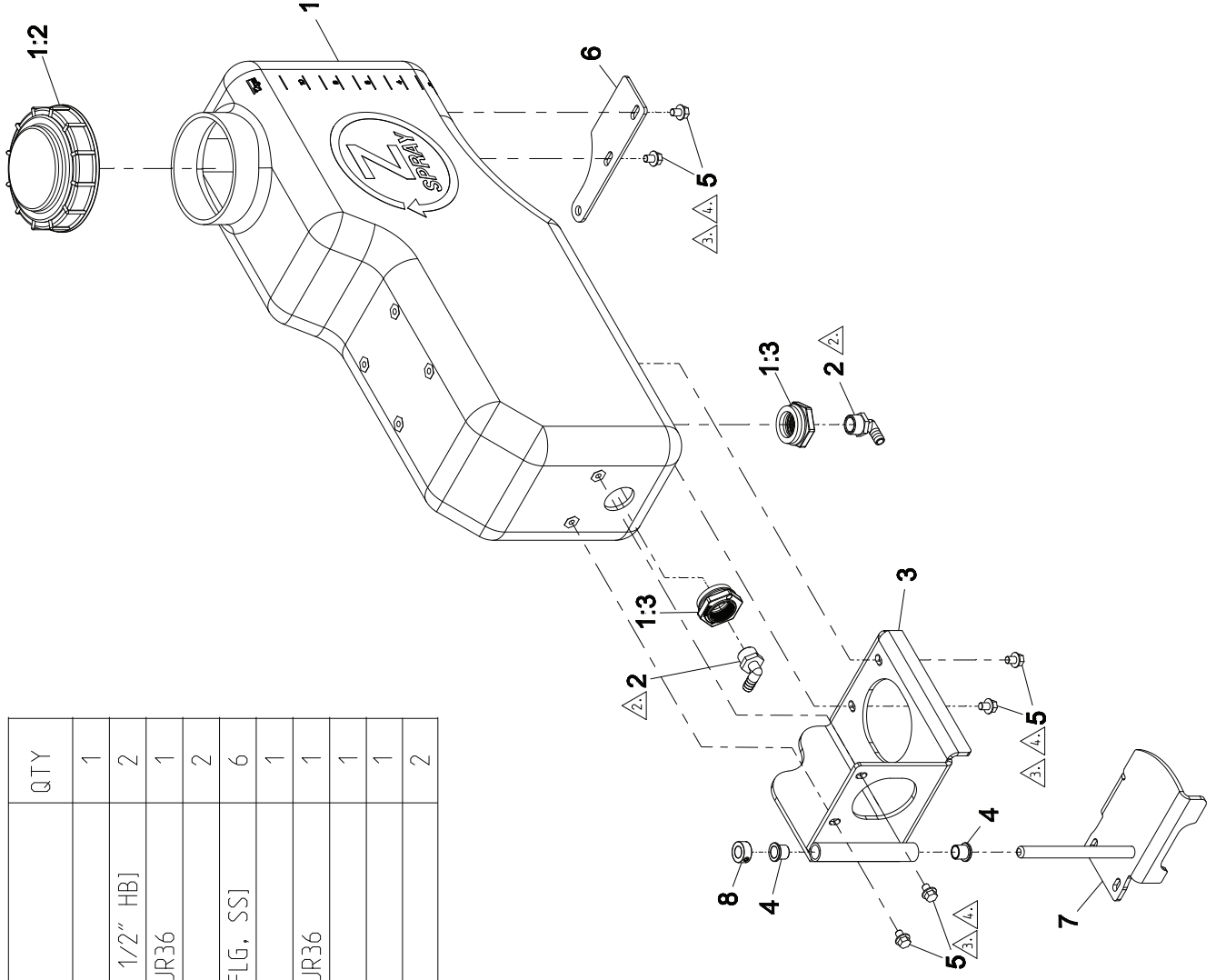
NOTE(S):

2. APPLY PIPE SEALANT TO THREADS BEFORE INSERTION.

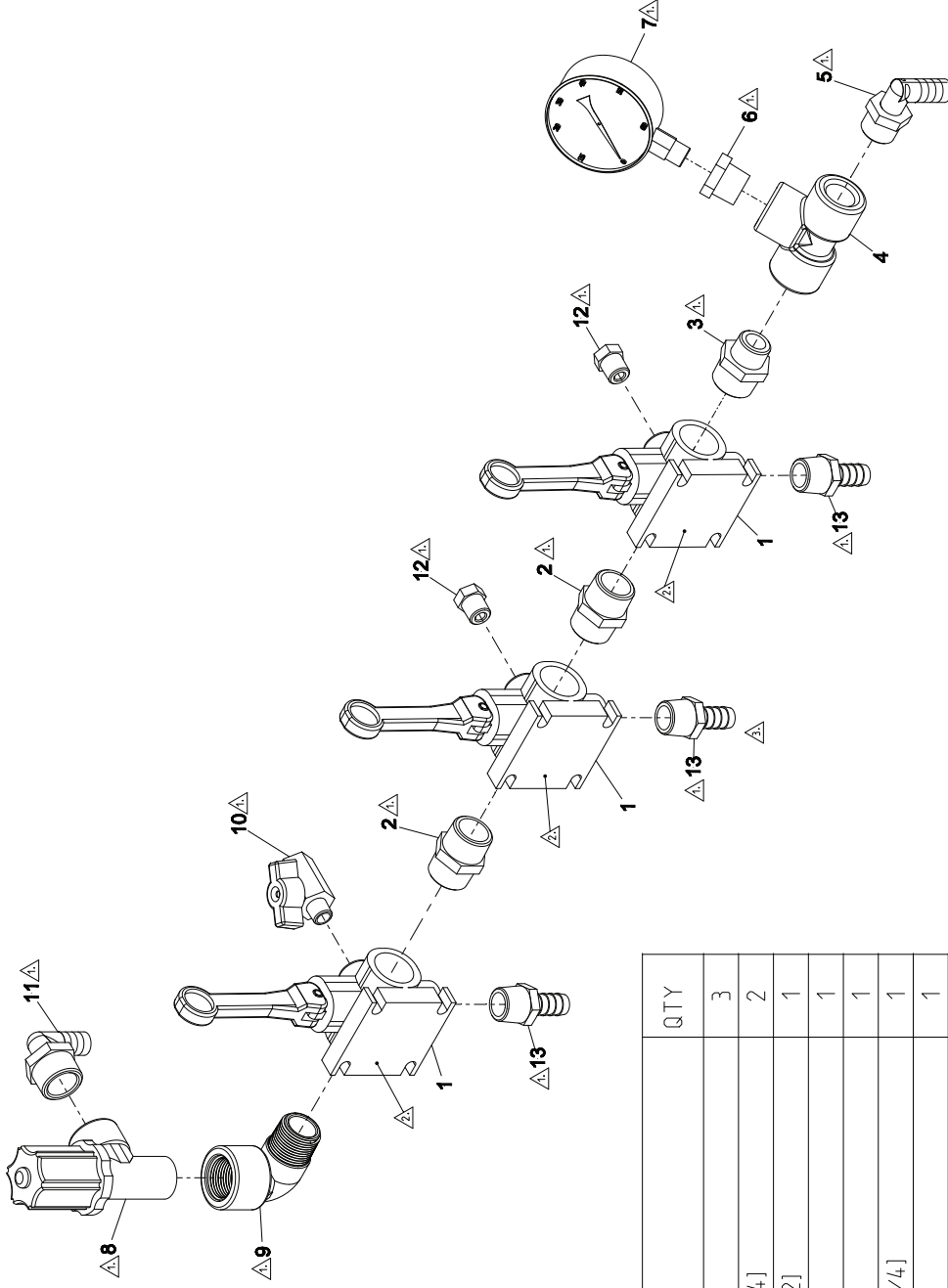
3. APPLY LOCTITE 505-33 TO THREADS.

4. TORQUE TO 143±14 IN-LBS.

5. AFTER ASSEMBLED, ITEM 7 SHOULD PIVOT FREELY IN ITEM 3.



MANIFOLD-ASM [JR 36]



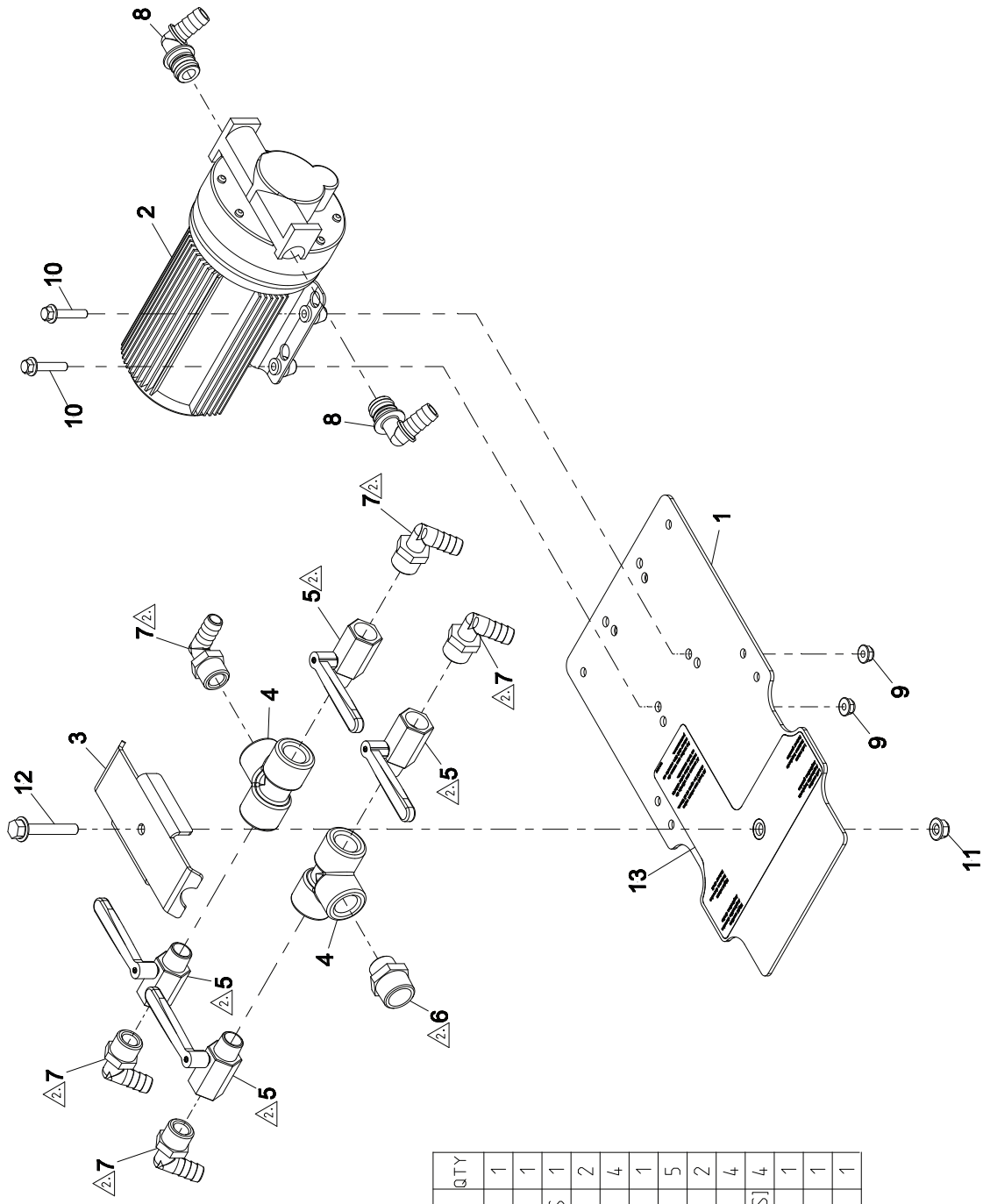
ITEM	PART NUMBER	DESCRIPTION	QTY
1	135-5721	VALVE-DIRECTO [AA6B]	3
2	135-5741	FITTING-NIPPLE [3/4 X 3/4]	2
3	135-5742	FITTING-NIPPLE [3/4 X 1/2]	1
4	94-7100	TEE 1/2"	1
5	120-8673	FITTING-ELBOW , HOSEBARB	1
6	135-5743	FITTING-REDUCER [1/2 - 1/4]	1
7	135-5740	GAUGE	1
8	135-5736	VALVE-THROTTLE [N23520-3/4-PP]	1
9	132-7706	ELBOW -90 DEG, 3/4" NPT	1
10	135-5737	VALVE-CHROME, 1/4 [N90FMB14]	1
11	135-5744	FITTING-ELBOW , 90 [3/4" NPT - 1/2" HB]	1
12	135-5735	PLUG-VALVE [3F14]	2
13	120-8671	HOSE BARB-1/2" , LOW PRESSURE	3

NOTE(S):

1. APPLY PIPE SEALANT TO THREADS BEFORE INSERTION.

2. SURFACES SHOULD BE ON SAME PLANE AFTER ASSEMBLED.

ASM, LIQUID VALVE [JR36]



ITEM	PART NUMBER	DESCRIPTION	QTY
1	135-5491	MOUNT-PLATE, LIQUID VALVE	1
2	135-5759	PUMP-5.0 GPM	1
3	135-5504	PLATE-CLAMP, LIQUID VALVE FITTINGS	1
4	94-7100	TEE 1/2"	2
5	135-5760	VALVE-CHROME, 1/2 [N90FML12]	4
6	135-5742	FITTING-NIPPLE [3/4 X 1/2]	1
7	120-8673	FITTING-ELBOW, HOSEBARB	5
8	126-0961	FITTING-ELBOW, 3/4 QD X 1/2 BARB	2
9	135-6108	NUT-HEX FLANGE [1/4-20, NYLOC, SS]	4
10	135-6312	SCREW-HHF [1/4-20X1.25, SER FLG, SS]	4
11	135-6109	NUT-HEX FLANGE [5/16-18, NYLOC, SS]	1
12	126-2711	SCREW-HHF [5/16-18X2.00, SS]	1
13	135-6420	DECAL-VALVE[SPRAY]	1

NOTE(S):

2. APPLY PIPE SEALANT TO THREADS BEFORE INSERTION.

ASM-BOOM [JR36]

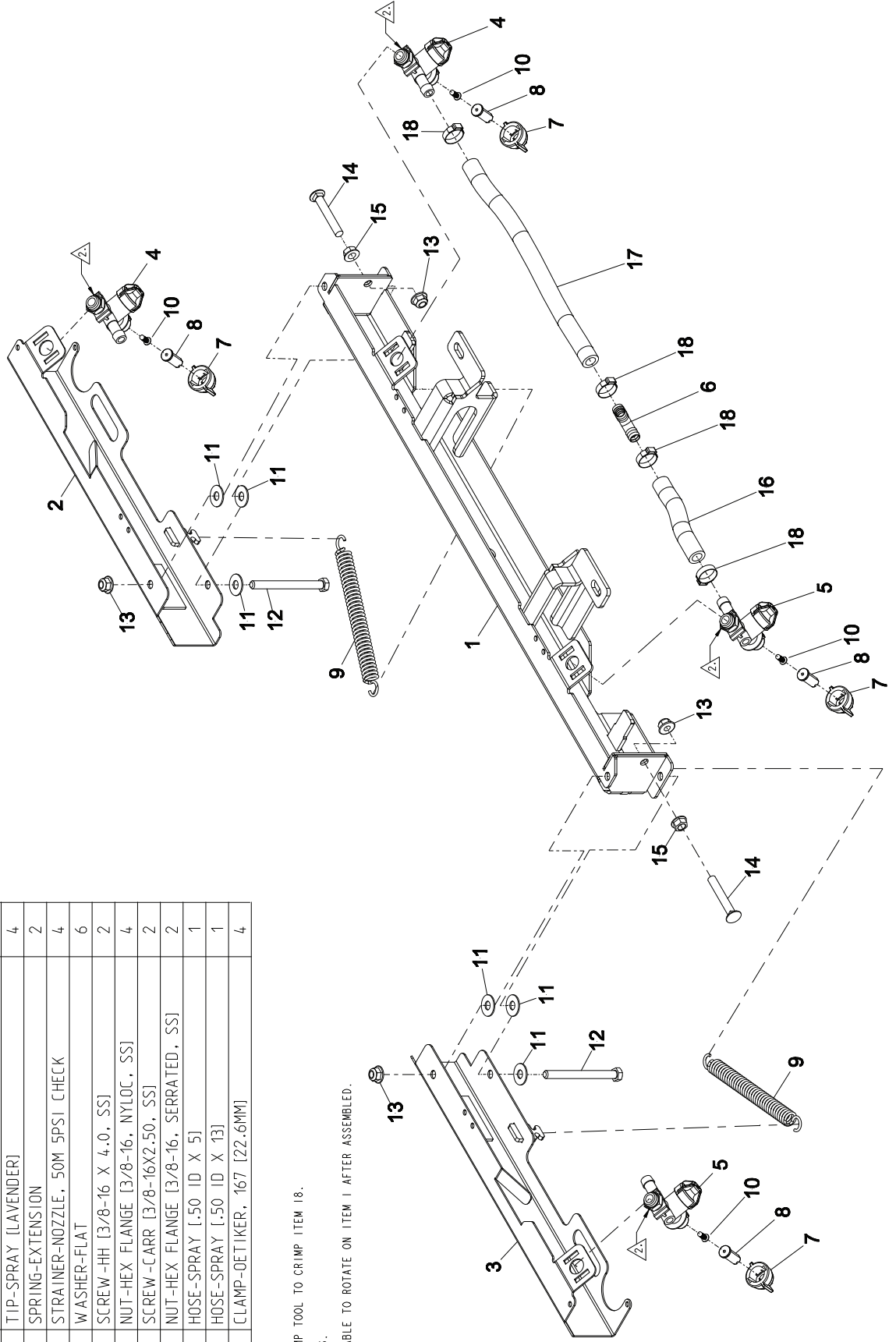
ITEM	PART NUMBER	DESCRIPTION	QTY
1	135-6798	BOOM-CENTER [WELD]	1
2	135-6800	BOOM-W/ING, RT [WELD]	1
3	135-6799	BOOM-W/ING, LT [WELD]	1
4	135-5790	BODY-NOZZLE, RIGHT	2
5	135-5788	BODY-NOZZLE, LEFT	2
6	138-2751	FITTING - TEE, 1/2 BARB	1
7	135-5781	CAP-NOZZLE [N402990-1]	4
8	135-5791	TIP-SPRAY [LAVENDER]	4
9	135-5780	SPRING-EXTENSION	2
10	126-3943	STRAINER-NOZZLE, 50M 5PSI CHECK	4
11	1126	WASHER-FLAT	6
12	135-6310	SCREW-HH [3/8-16 X 4.0, SS]	2
13	135-6110	NUT-HEX FLANGE [3/8-16, NYLOC, SS]	4
14	126-0702	SCREW-CARR [3/8-16X2.50, SS]	2
15	135-6806	NUT-HEX FLANGE [3/8-16, SERRATED, SS]	2
16	135-6298	HOSE-SPRAY [.50 ID X 5]	1
17	135-7129	HOSE-SPRAY [.50 ID X 13]	1
18	135-5692	CLAMP-OETIKER, 167 [22.6MM]	4

NOTE(S):

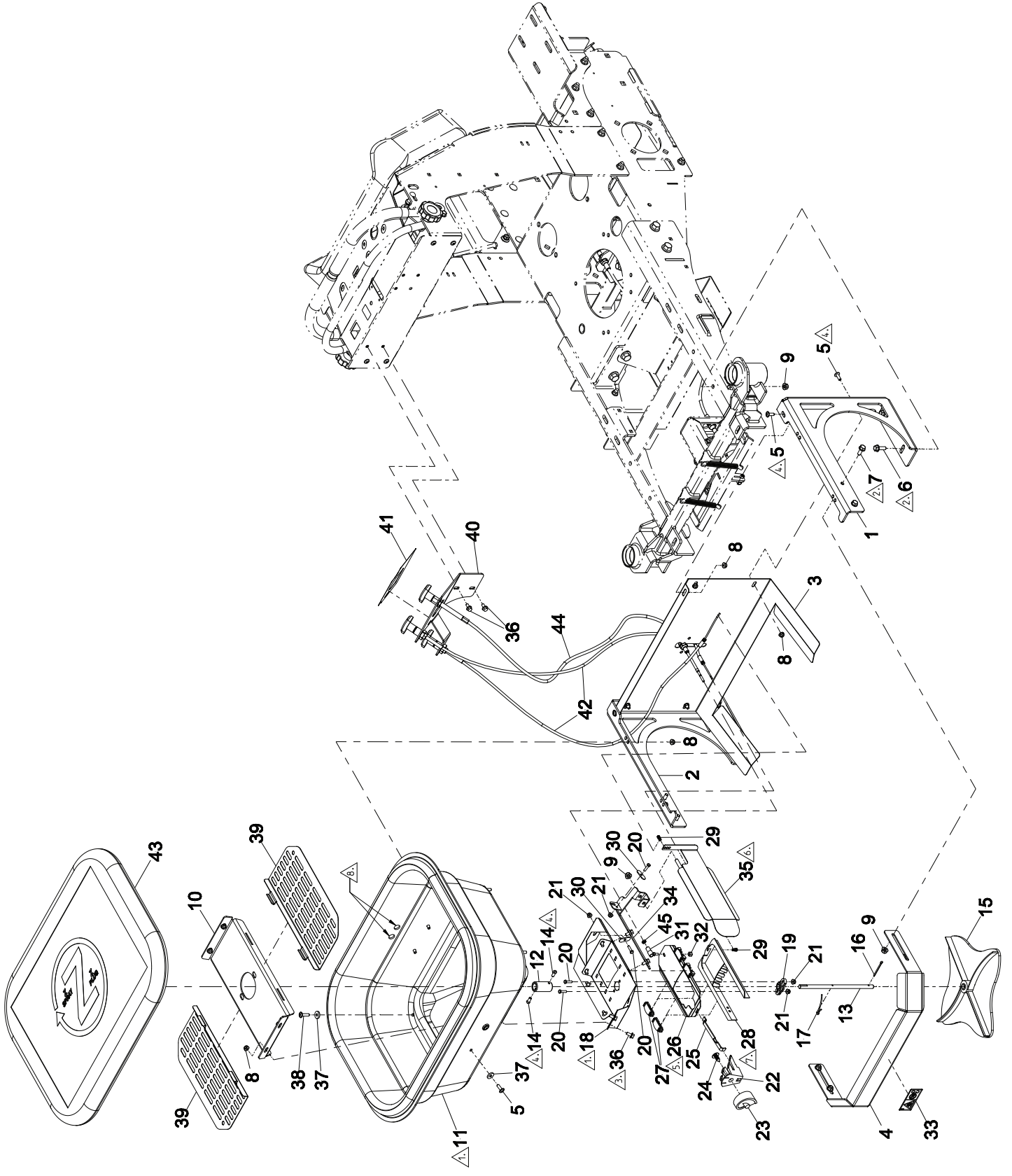
1. USE PROPER OETIKER CLAMP TOOL TO CRIMP ITEM 18.

2. TORQUE NUT TO 20 IN-LBS.

3. ITEMS 2 AND 3 MUST BE ABLE TO ROTATE ON ITEM 1 AFTER ASSEMBLED.



SPREADER



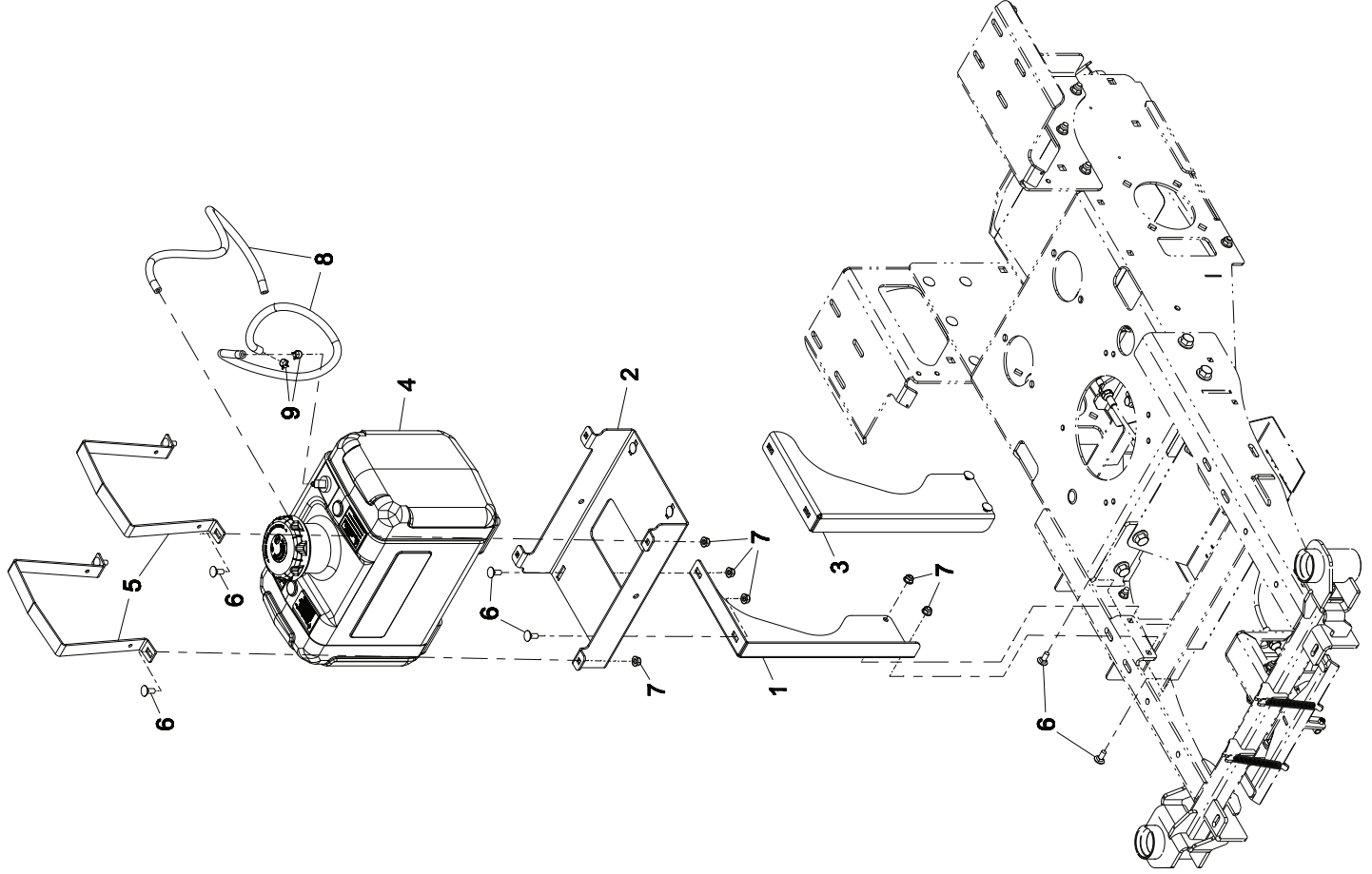
SPREADER

ITEM	PART NUMBER	DESCRIPTION	QTY
1	142-0784	WLD, FRAME, HOPPER, L, 120	1
2	142-0785	WLD, FRAME, HOPPER, R, 120	1
3	142-0708	BACKSHIELD, HOPPER, JR36	1
4	142-0698	BUMPER, FRONT, HOPPER, 120	1
5	135-7080	SCREW-HSBHF [.25-20 X .750, SS]	10
6	135-6272	SCREW-HHF [5/16-18 X 1.0, SER FLG, SS]	4
7	126-2712	SCREW-HHF [5/16-18X.75, SS]	4
8	135-6108	NUT-HEX FLANGE [1/4-20, NYLOC, SS]	14
9	135-6109	NUT-HEX FLANGE [5/16-18, NYLOC, SS]	9
10	142-1987	PAN-HOPPER, 120	1
11	135-8519	HOPPER-120LBS	1
12	135-5937	COUPLER-SS	1
13	135-8504	SHAFT-HOPPER, 120	1
14	3241-7	SCREW-SQH [.250X20X.50]	2
15	135-5954	SPINNER-SPREADER [SHORT HUB]	1
16	135-6340	PIN-COTTER [1/8 X 1.75, SS]	1
17	135-5957	WIRE-AGITATOR [SS-297-0003]	1
18	142-1990	BASE PLATE, HOPPER, 120	1
19	135-5943	BEARING-FLANGE [EFO1-06R]	1
20	135-6356	SCREW-HH [#10-24 X 3/4, SS]	4
21	135-6342	NUT-HEX FLANGE [10-24, NYLOC, SS]	4
22	126-0985	DIAL MOUNT	1
23	126-0988	DIAL	1
24	126-0986	PINE TREE CLIP	1
25	135-5965	LINKAGE-GATE, RATE	1
26	135-5573	SLIDE-DOOR, HOPPER	1
27	126-0990	RATE GATE GUIDE	4
28	126-0991	ACCUWAY DIFFUSER	1
29	135-5961	RETAINER-CABLE, WIRE [W/SCW]	2
30	135-5569	RETAINER, CABLE	2
31	135-5682	BALL JOINT-SS [10-32]	1
32	HDW 05856	NUT,NYL INS,#10-32,ST/ST 18-8	1
33	135-6725	DECAL-ENTANGLEMENT HAZARD	1
34	135-5388	MOUNT-DEFLECTOR, SIDE [WELD]	1
35	135-5589	DEFLECTOR-SIDE, SPREADER [WELD]	1
36	135-6280	SCREW-HHF [1/4-20 X 1/2, SER FLG, SS]	10
37	135-6341	WASHER [1/4 X 3/4 X 1/8, NYL]	8
38	135-7081	SCREW-HSBHF [.25-20 X 1.0, SS]	4
39	142-1995	SCREEN, HOPPER, 120	2
40	135-5505	MOUNT-SPEEDOMETER	1
41	135-6279	DECAL-HOPPER CONTROL[ZSPRAY]	1
42	135-5931	CABLE-PUSH/PULL [LOCKING]	2
43	135-8483	SMALL HOPPER COVER 120	1
44	135-8492	120LB HOPPER CABLE	1
45	520-0019	NUT,HEX JAM MCH SCR,10-32,SST	1

NOTE(S):

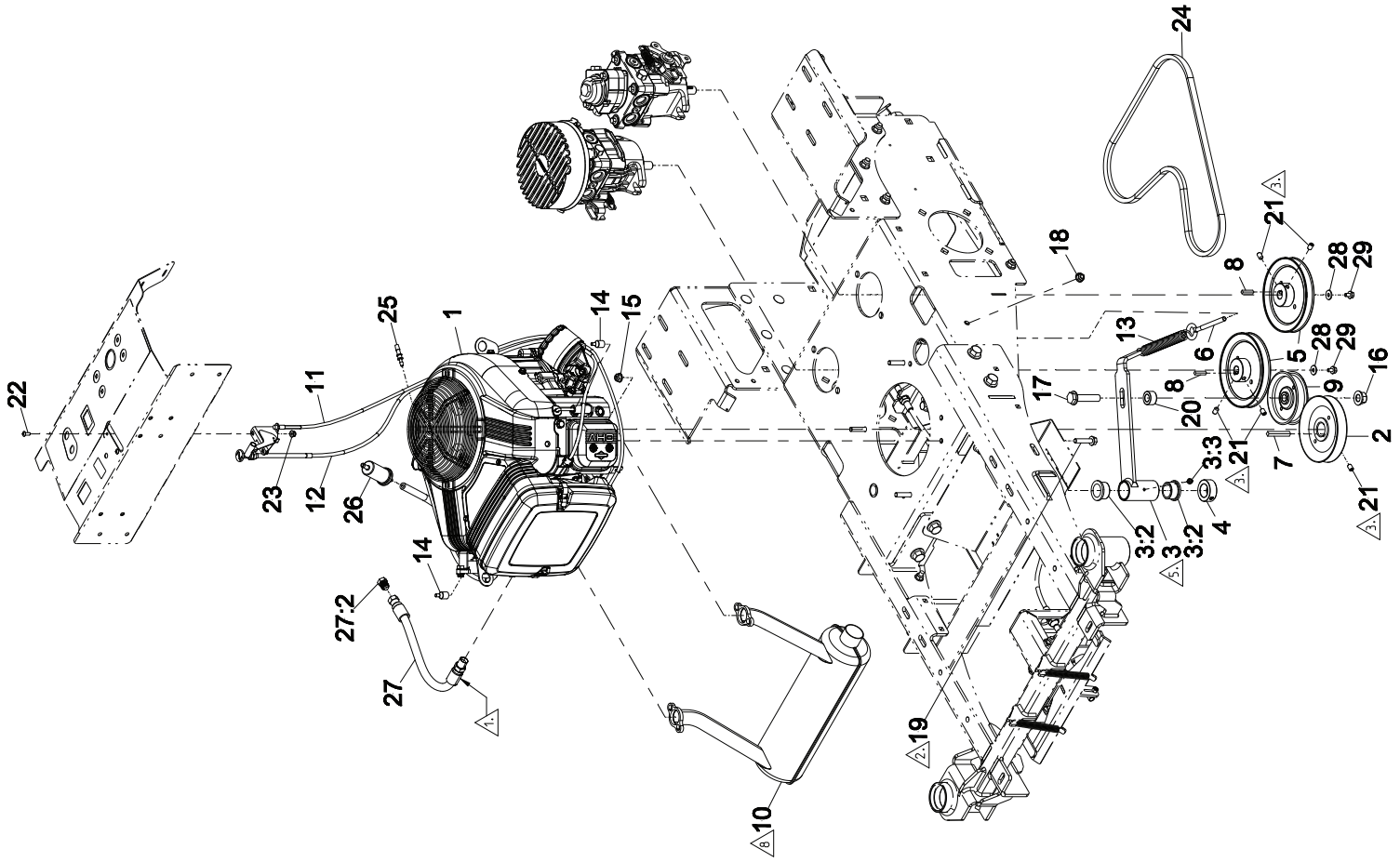
1. APPLY BLACK RTV SILICONE (135-6636, 1 OZ) TO HOPPER BEFORE ASSEMBLING HOPPER BASE PLATE.
2. TORQUE TO 132 +/-13 IN-LBS.
3. USE LOCTITE 243, TORQUE TO 44 +/-4 IN-LBS.
4. TORQUE TO 75 +/-7 IN-LBS.
5. CABLE, ITEM 44 CONNECTS TO HOPPER SLIDE DOOR, ITEM 26.
6. CABLE, ITEM 42 CONNECTS TO SPREADER-SIDE DEFLECTOR, ITEM 35.
7. CABLE, ITEM 42 CONNECTS TO DIFFUSER, ITEM 28.
8. USE PUTTY TAPE TO SEAL HOLES IN HOPPER AROUND HYDRAULIC HOSES.

FUEL



ITEM	PART NUMBER	DESCRIPTION	QTY
1	142-0756	PANEL, PLATFORM, FUEL TANK, JR36	1
2	135-7243	MOUNT-TANK, FUEL [JR36]	1
3	142-0755	PANEL, PLATFORM, FUEL TANK, JR36, SS.,12	1
4	135-7172	ASM-TANK, 5 GAL	1
5	135-7211	STRAP, GAS TANK	2
6	126-0695	SCREW-CARR [5/16-18 X .75, SS]	12
7	135-6109	NUT-HEX FLANGE [5/16-18, NYLOC, SS]	12
8	109-1395	FUEL, HOSE [.25X27.0, J30R7]	1
9	2412-98	CLAMP	2

ENGINE

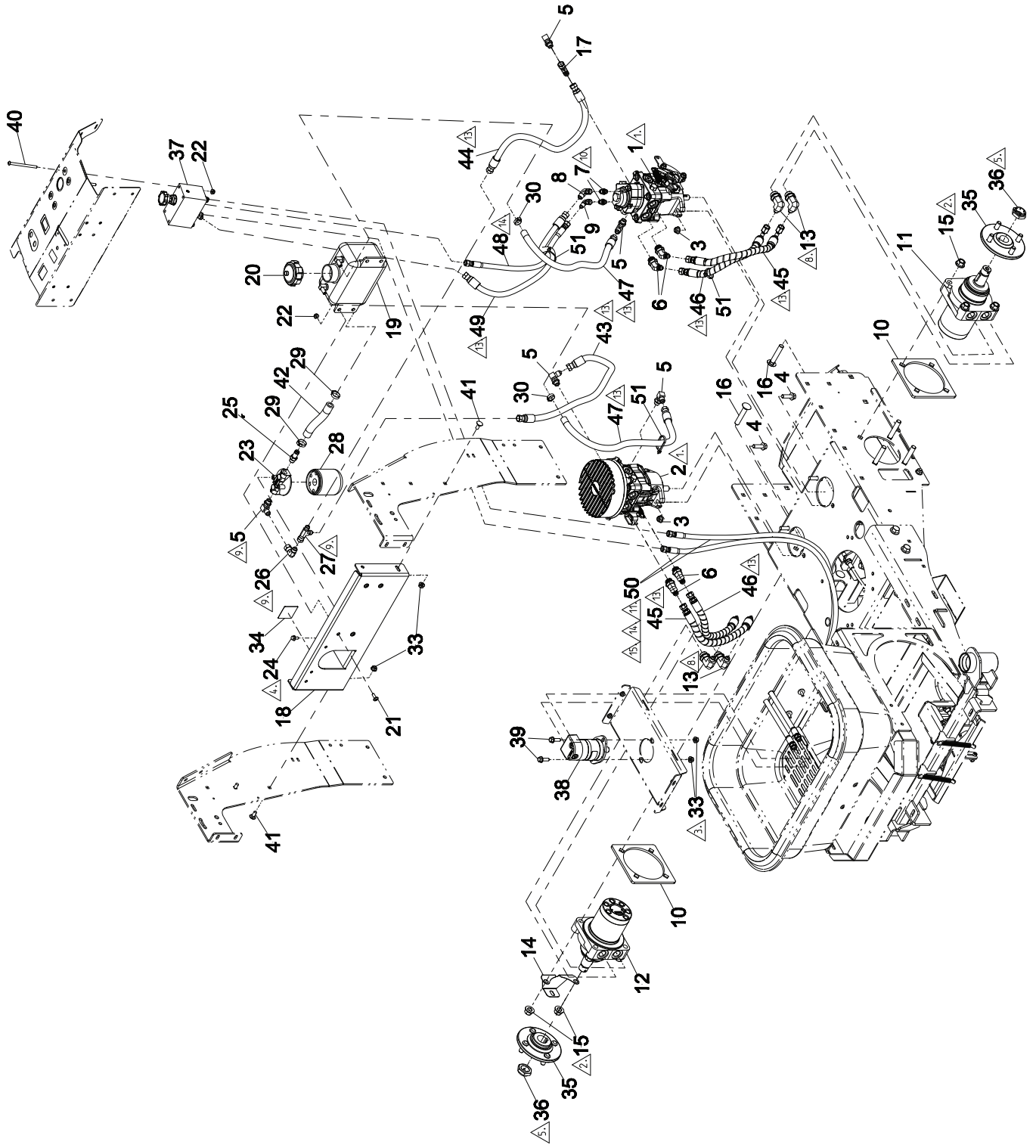


ITEM	PART NUMBER	DESCRIPTION	QTY
1	135-5253	ENGINE-16HP, VANGUARD, VERTICAL	1
2	135-5657	PULLEY-DRIVE	1
3	135-6833	ASM, ARM-TENSION	1
4	135-5382	COLLAR [1.0" ID]	1
5	135-9068	PULLEY ASM [15MM]	2
6	142-0418	BOLT, EYE - 5/8 X 5/16-18 X 5	1
7	103-4177	KEY,MACHINE 1/4X1/4X2	1
8	1-807272	KEY,MACHINE 5mmX5mmX25mm	2
9	135-5662	PULLEY-IDLER, FLAT	1
10	135-9245	BRIGGS 16/18 HP MUFFLER	1
11	135-5260	CABLE-THROTTLE	1
12	135-5707	CABLE-CHOKE	1
13	135-5780	SPRING-EXTENSION	1
14	135-5677	TUBE-HEAT SHRINK, 1/2	2
15	135-6109	NUT-HEX FLANGE [5/16-18, NYLOC, SS]	4
16	99-5107	NUT-LOCK, -50-13	1
17	3234-46	SCREW -HHF [1.500-13 X 2.25]	1
18	104-8300	NUT-FLANGE, NI [5/16-18 UNC]	1
19	142-0559	SCREW -HHF [5/16-18X1.50, SER FLG, SS]	4
20	116-2959	SPACER [1.562 X 1.00, YZ]	1
21	3246-47	SCREW-SET, [5/16-24 X .500]	5
22	135-6374	SCREW-HSBH [#10-24 X 1/2, SS]	2
23	135-6342	NUT-HEX FLANGE [10-24, NYLOC, SS]	2
24	135-9078	BELT-V, A48	1
25	135-5678	BARB-FUEL [3/16 X 1/4]	1
26	135-6687	FILTER-FUEL [B&S]	1
27	135-5365	ASM, OIL DRAIN HOSE W/PLUG	1
28	135-6273	WASHER [M6X18X1.6]	2
29	81-1280	SCREW - HHF [M6 X 1.0 X 10]	2
3:2	256-132	BUSHING-FLANGED	2
3:3	302-63	FITTING-GREASE, ZERK	1

NOTE(S):

1. APPLY THREAD SEALANT AND TORQUE TO 20±3 FT.-LBS.
2. TORQUE TO 132±11 IN.-LBS (4X).
3. TORQUE TO 156±15 IN.-LBS AND APPLY LOCTITE (5X).
5. GREASE PIVOT, ARM MUST PIVOT FREELY.
8. ASSEMBLE EXHAUST (ITEM 10) TO ENGINE BLOCK (ITEM 1) WITH HARDWARE AND GASKET PROVIDED WITH ENGINE. TORQUE TO 14±1 FT.-LBS (4X).
10. ENGINE RPM = 3300±100

HYDRO 1



HYDRO 1

ITEM	PART NUMBER	DESCRIPTION	QTY
1	135-5250	PUMP-HYDRO, PG WITH AUX [LT]	1
2	135-5251	PUMP-HYDRO, PG [RT]	1
3	135-6110	NUT-HEX FLANGE [3/8-16, NYLOC, SS]	4
4	135-6211	SCREW-HHF [3/8-16 X 1.25, SER FLG, SS]	4
5	103-1802	FTG-ELBOW 90 [MORB-6,MJIC-6]	5
6	131-1308	FITTING [1/2 ORB - 3/8 37FL]	4
7	353-545	FITTING-STRGHT[ORB-4,37 MALE-4]	2
8	135-5680	FITTING-90 SWIVEL [6500-6-4]	1
9	135-9114	4MJIC-4FJIC 90 DEG SWIVEL	1
10	142-0709	BACKPLATE, WHEEL, JR36	2
11	135-6689	MOTOR-WHEEL, LT [TJ195]	1
12	135-6688	MOTOR-WHEEL, RT [TJ195]	1
13	AU218-5281	FITTING-ELBOW .90[ORB-10.37 DEG-6	4
14	135-5574	BRACKET-HOPPER, SPEEDOMETER SENSOR	1
15	99-5107	NUT-LOCK, .50-13	8
16	126-0095	BOLT-CARR., [1/2-13 X 2 3/4, GR5, YZ]	8
17	AU218-5172	FITTING-ELBOW .45[37 SWVL, 37 MALE]	1
18	135-9773	MOUNT, HYDRAULIC FILTER, JR36	1
19	135-9056	2 QT FLAMBEAU HYDRO TANK	1
20	135-5713	CAP-VENTED [2.25]	1
21	135-7080	SCREW-HSBHF [.25-20 X .750, SS]	4
22	135-6108	NUT-HEX FLANGE [1/4-20, NYLOC, SS]	8
23	104-7836	HEAD-FILTER	1
24	135-6280	SCREW-HHF [1/4-20 X 1/2, SER FLG, SS]	2
25	109-3278	ADAPTER,STRAIGHT	1
26	AU218-980	ELBOW-90 SWVL 37FL 3/8 TUBE	1
27	353-877	SWIVEL-TEE RUN	1
28	135-5695	FILTER-HYDRAULIC	1
29	135-5692	CLAMP-OETIKER, 167 [22.6MM]	2
30	135-5757	CLAMP-OETIKER, 167 [18.5MM]	2
31	135-8846	EXTENSION, HYDRO-PUMP, JR36	2
32	126-2712	SCREW-HHF [5/16-18X.75, SS]	4
33	135-6109	NUT-HEX FLANGE [5/16-18, NYLOC, SS]	9
34	135-6398	DECAL-HYD AND ENG OILZSPRAY]	1
35	135-5684	HUB-WHEEL	2
36	116-1399	LOCKNUT-WHEEL MOTOR	2
37	135-5256	MANIFOLD-HOPPER, W/OUT RELIEF	1
38	135-5243	MOTOR-HYDRAULIC, SPREADER	1
39	135-6272	SCREW-HHF [5/16-18 X 1.0, SER FLG, SS]	2
40	135-6385	SCREW-HSBH [1/4-20 X 3.50, SS]	4
41	126-0695	SCREW-CARR [5/16-18 X .75, SS]	3
42	109-5577	HOSE, HYDRAULIC [5.0 X 5.50]	1
43	135-9977	HOSE ASM, HYD LP [3/8 X 21.5, 37F, 37F]	1
44	142-0023	HOSE ASM, HYD LP [3/8 X 22.75, 37F, 37F]	1
45	135-9993	HOSE ASM, HYD HP[3/8 X 15.0,37F, 90 37F]	1
46	135-9994	HOSE ASM, HYD HP[3/8 X 14.25,37F, 90 37F]	1
47	135-9978	HOSE ASM, HYD LP[3/8 X 24.0, STR 37-F6]	1
48	135-9960	HOSE ASM, HYD HP [1/4 X 23.5, 37F, 37F]	1
49	142-0019	HOSE ASM, HYD LP [3/8 X 26.75, 37F, 37F]	1
50	135-5356	HOSE ASM, HYD HP [1/4 X 48.5, ORM, 37F]	1
51	3290-378	TIE, ZIP	3

NOTE(S):

1. APPLY ANTI-SEIZE (505-161, .05 OZ)
2. TORQUE TO 105±10 FT-LBS (8X)
3. TORQUE TO 132±13 IN-LBS (2X)
4. TORQUE TO 56±5 IN-LBS (2X)
5. TORQUE TO 235±23 FT-LBS (2X)
6. FILL OIL 15W-50
7. LUBRICATE ALL O-RINGS BEFORE ASM.
USE VANISHING OIL 505-133, .01 OZ.
8. TORQUE TO 77±8 FT-LBS (4X)
9. TORQUE TO 13±2 FT-LBS (4X)
10. TORQUE TO 8±1 FT-LBS (2X)
11. WRAP ITEM 50 TOGETHER USING ITEM 52 (135-6165).

HOSE TORQUE CHART

12. GREEN LABEL -8: 37±4 FT-LBS (9X)
13. BLUE LABEL -6: 18±3 FT-LBS (18X)
14. YELLOW LABEL -4: 12±2 FT-LBS (8X)
15. WHITE LABEL -6: 26 ±3 FT-LBS (4X)

HYDRO 2

ITEM	PART NUMBER	DESCRIPTION	QTY
32	126-2712	SCREW -HHF [5/16-18X.75, SS]	4
33	135-6109	NUT -HEX FLANGE [5/16-18, NYLOC, SS]	4
34	135-8846	EXTENSION, HYDRO-PUMP, JR36	2

