



Z-Spray Accessories

Parts Guide

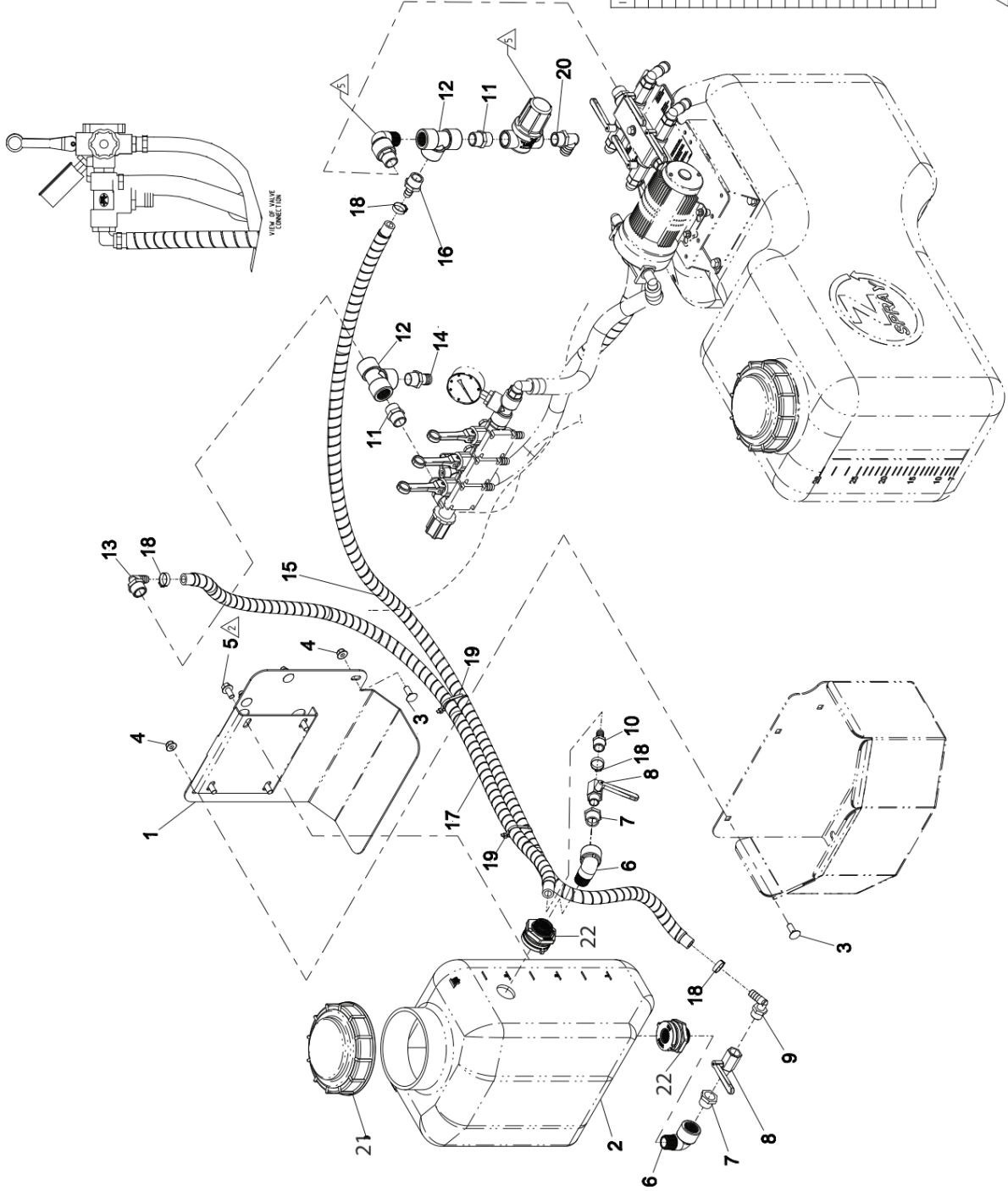
Junior, Intermediate & Max
2018 & Newer



TABLE OF CONTENTS

Z-Max 7 Gallon Auxiliary Tank.....	2
Intermediate and Junior 7 Gallon Auxiliary Tank	3
Z-Max 7 Gallon Isolated Tank	4
Intermediate and Junior 7 Gallon Isolated Tank	5
Z-Max 30 Gallon Auxiliary Tank.....	6
Intermediate 30 Gallon Auxiliary Tank.....	7
Foam Marker.....	8-9

Z-MAX 7 Gallon Auxiliary Tank

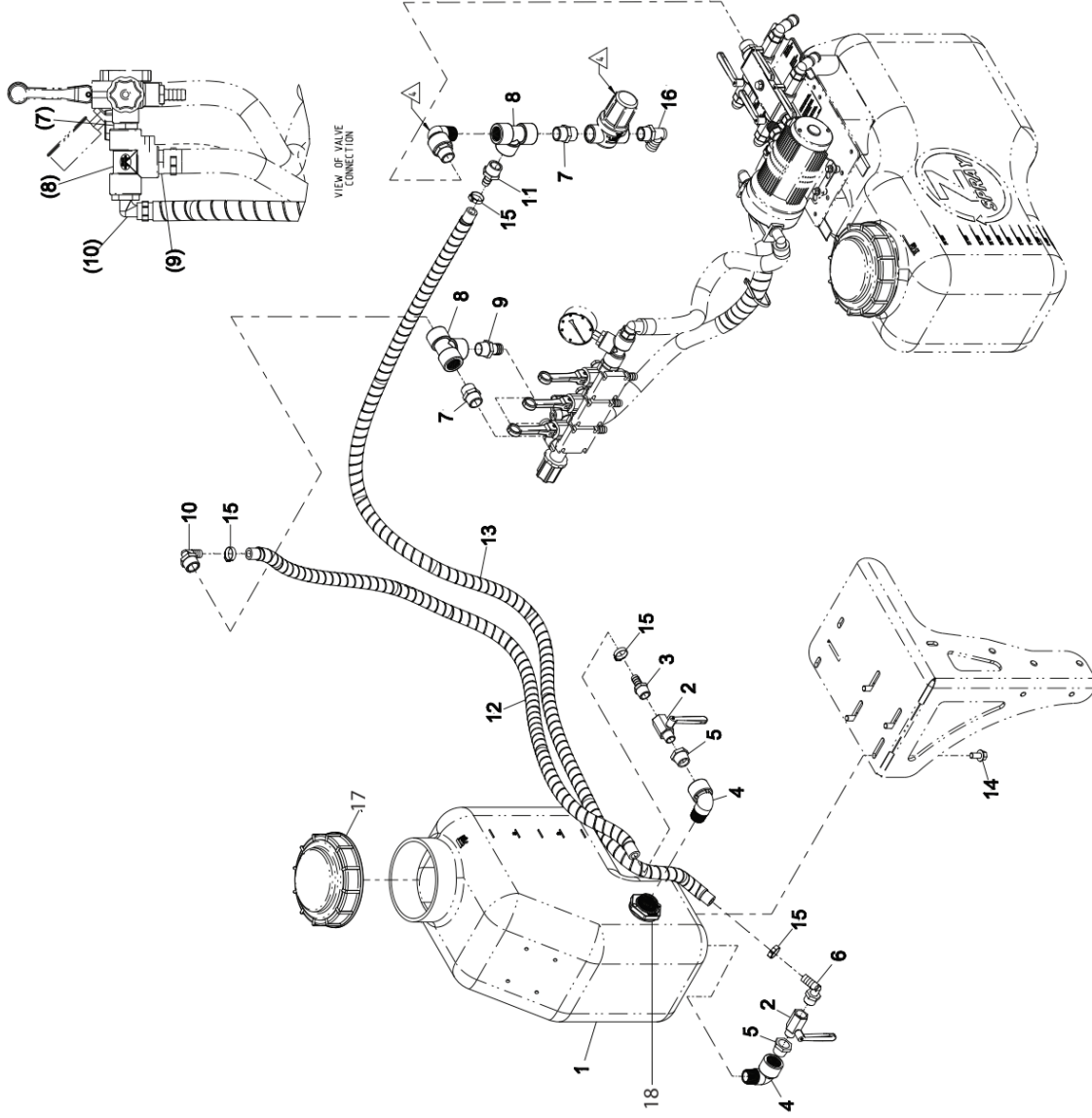


ITEM	PART NUMBER	DESCRIPTION	QTY
1	135-6240	MOUNT-AUX/SD, 7GAL LT (W/ELD)	1
2	135-6599	ASH-TANK, AUX/SD, 7GAL, LT	1
3	124-0980	SCREW-CARR 13/16-16X1.00, SSI	4
4	135-6110	NUT-HEX FLANGE 13/16-16, NYLOC, SSI	4
5	135-6274	SCREW-PHF 13/16-16 X 3/4, SER FIG, SSI	4
6	132-7706	ELBOW-90 DEG, 3/4" NPT	3
7	41969	REDUCER-RUSHING, PLASTIC	2
8	135-5760	VALVE-CHROME, 1/2 (NOOPM12)	2
9	120-8673	FITTING-ELBOW HOSEBARB	1
10	120-8671	HOSE BARB-1/2" LOW PRESSURE	1
11	135-5714	FITTING-NIPPLE 1/4" X 3/4"	1
12	135-6004	FITTING-TEE 1/4" FPT	2
13	135-5714	FITTING-ELBOW, 90 [3/4" NPT - 1/2" HB]	1
14	41257	HOSE BARB	1
15	135-6605	HOSE-AUXILIARY, WRAPPED (0.5 ID X .75)	1
16	135-6598	FITTING-STRAIGHT BARB-8, NPTF-42	1
17	135-6602	HOSE-AUXILIARY, WRAPPED (1.5 ID X .50)	1
18	135-5692	CLAMP-QUINER, .67 [22.6MM]	4
19	3290-378	TIE, ZIP	2
20	135-5772	FITTING-ELBOW, 90 [3/4" NPT X 3/4" HB]	1
21	135-5916	CAP-TANK	1
22	126-4993	FITTING-BULKHEAD [3/4" NPT TANK]	2

NOTE(S):

- 1. APPLY PIPE SEALANT (135-6568) TO ALL PIPE THREADS BEFORE INSERTION.
- 2. USE LOCTITE 243, TORQUE TO 143 +/- 14 IN-LBS
- 3. PARTS CURRENTLY ON UNIT SHOWN FOR ASSEMBLY PURPOSES ONLY

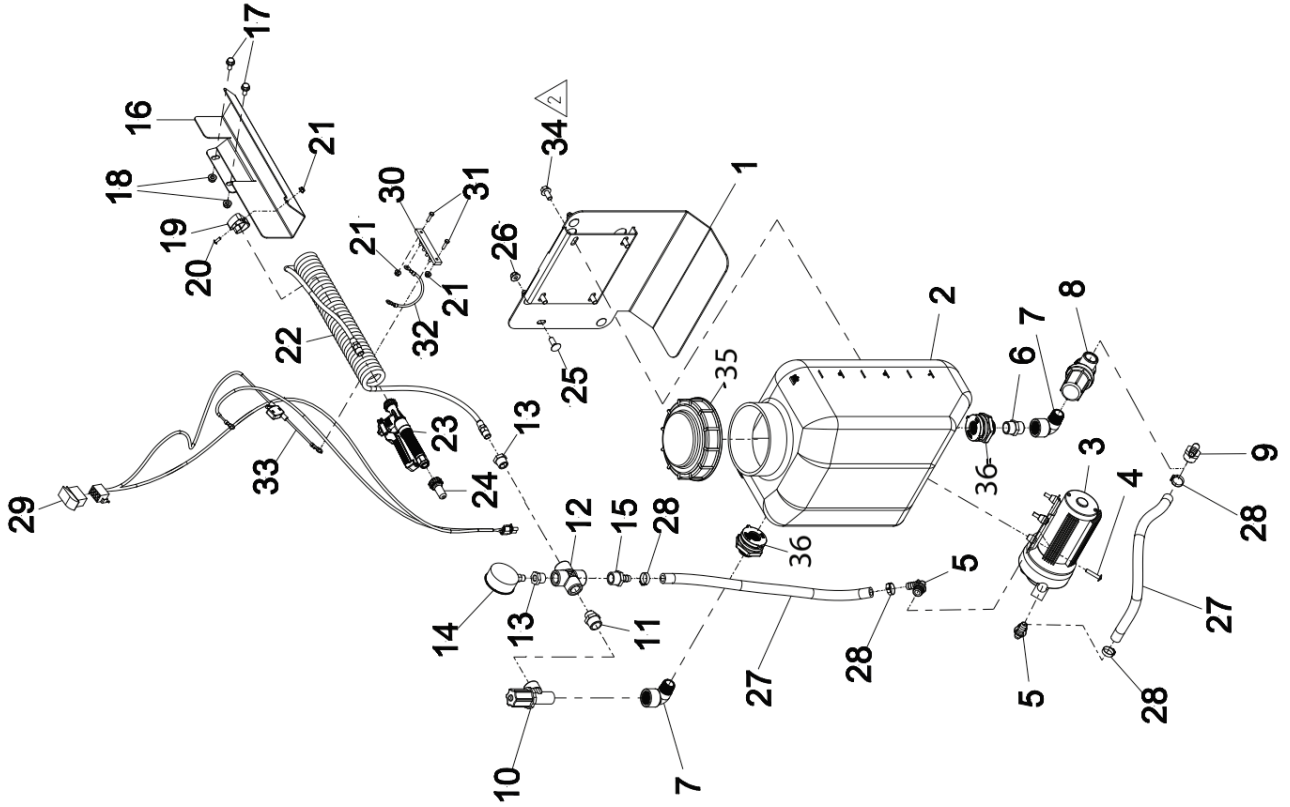
Intermediate & Junior 7 Gallon Auxiliary Tank



ITEM	PART NUMBER	DESCRIPTION	QTY
1	135-6655	ASM-TANK, AUX 7GAL	1
2	135-5760	VALVE-CHROME, 1/2" (N90FMI12)	2
3	120-8671	HOSE BARB-1/2", LOW PRESSURE	1
4	132-7706	ELBOW-90 DEG, 3/4" NPT	3
5	41969	REDUCER-BUSHING, PLASTIC	2
6	120-8673	FITTING-ELBOW, HOSEBARB	1
7	135-5741	FITTING-NIPPLE [3/4" X 3/4"]	3
8	135-6004	FITTING-TEE [3/4" FPT]	2
9	41257	HOSE BARB	1
10	135-5744	FITTING-ELBOW, 90° [3/4" NPT - 1/2" HB]	1
11	135-6598	FITTING-STRAIGHT [BARB-8, NPTF-12]	1
12	135-6604	HOSE-AUXILIARY, WRAPPED [1.5 ID X 50]	1
13	135-6605	HOSE-AUXILIARY, WRAPPED [0.5 ID X 75]	1
14	135-6274	SCREW-HHF [3/8-16 X 3/4-, SER. FLG., SS]	4
15	135-5692	CLAMP-OETIKER, 167 [22.6MM]	4
16	135-5772	FITTING-ELBOW, 90° [3/4" MPT X 3/4" HB]	1
17	135-5916	CAP-TANK	1
18	126-4393	FITTING-BULKHEAD [3/4" NPT TANK]	2

NOTE(S):
 1. APPLY PIPE SEALANT (135-6568) TO ALL PIPE THREADS BEFORE INSERTION.
 4. PARTS CURRENTLY ON UNIT SHOWN FOR ASSEMBLY PURPOSE ONLY.

Z-Max 7 Gallon Isolated Tank



ITEM	PART NUMBER	DESCRIPTION	QTY
1	135-6241	MOUNT-AUX/ISO, 7GAL RT [WELD]	1
2	135-6600	ASM-TANK, AUX/ISO, 7GAL RT	1
3	135-5759	PUMP-5.0 GPM	1
4	135-6608	SCREW-PTH [1/4-20 X 1.25, SS]	4
5	126-0961	FITTING-ELBOW, 3/4 QD X 1/2 BARB	2
6	135-5741	FITTING-NIPPLE [3/4 X 3/4]	1
7	132-7706	ELBOW-90 DEG, 3/4" NPT	2
8	135-5765	STRAINER-INLINE [3/4 NPT PP-50]	1
9	135-5744	FITTING-ELBOW, 90 [3/4" NPT - 1/2" HB]	1
10	135-5736	VALVE-THROTTLE [N23520-3/4-PP]	1
11	135-5742	FITTING-NIPPLE [3/4 X 1/2]	1
12	110-5248	CROSS-POLY 1/2"	1
13	135-5743	FITTING-REDUCER [1/2 - 1/4]	2
14	135-5740	GAUGE	1
15	135-6598	FITTING-STRAIGHT [BARB-8, NPTF-12]	1
16	135-6243	TRAY-GUN, 7GAL RT	1
17	126-2712	SCREW-HHF [5/16-18X.75, SS]	2
18	135-6109	NUT-HEX FLANGE [5/16-18, NYLOC, SS]	2
19	135-5661	HOLDER-TOOL, CLIP [BLACK VINYL COATED]	1
20	135-6374	SCREW-HSBH [#10-24 X 1/2, SS]	1
21	135-6342	NUT-HEX FLANGE [10-24, NYLOC, SS]	3
22	135-6612	HOSE-COILED, 15 FT	1
23	135-5773	GUN-SPRAY, SPOT	2
24	135-5778	TIP-SPRAY, #12 SPOT	1
25	126-0980	SCREW-CARR [3/8-16X1.00, SS]	4
26	135-6110	NUT-HEX FLANGE [3/8-16, NYLOC, SS]	4
27	135-6610	HOSE, ISO TANK [0.5 ID X 18]	1
28	135-5692	CLAMP-OETIKER, 167 [22.6MM]	4
29	100-8469	SWITCH ROCKER	1
30	135-6628	BLOCK-TERMINAL	1
31	135-6356	SCREW-HH [#10-24 X 3/4, SS]	2
32	135-6630	HARNESS-WIRE, JUMPER	1
33	135-6648	HARNESS-ACCESSORY	1
34	135-6274	SCREW-HHF [3/8-16 X 3/4, SER FLG, SS]	4
35	135-5916	CAP-TANK	1
36	126-4393	FITTING-BULKHEAD [3/4" NPT TANK]	2

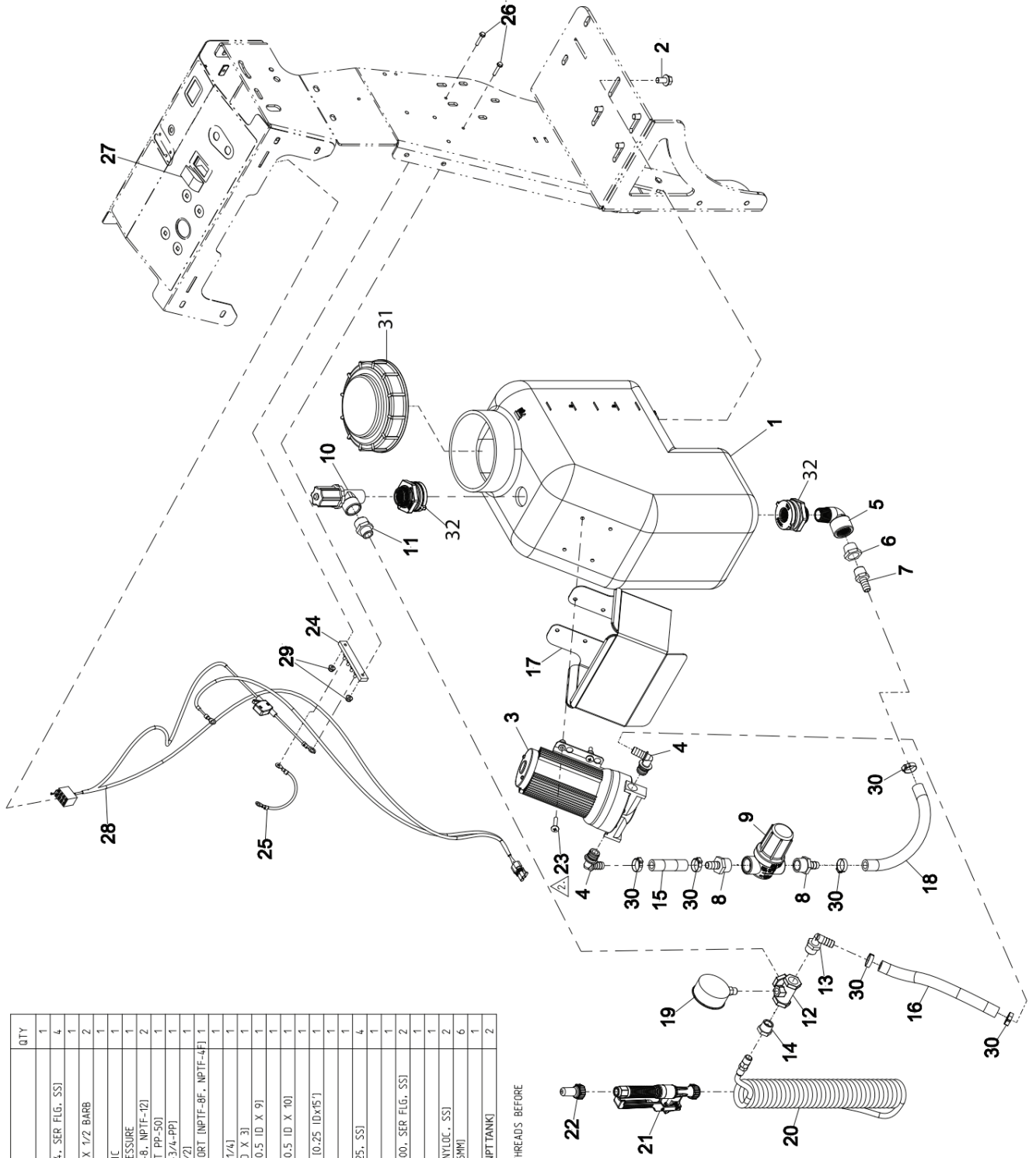
NOTE(S):
 1. APPLY PIPE SEALANT (135-6588) TO ALL PIPE THREADS BEFORE INSERTION.
 2. USE LOCTITE 243. TORQUE TO 143 +/- 14 IN-LBS.

Intermediate & Junior 7 Gallon Isolated Tank

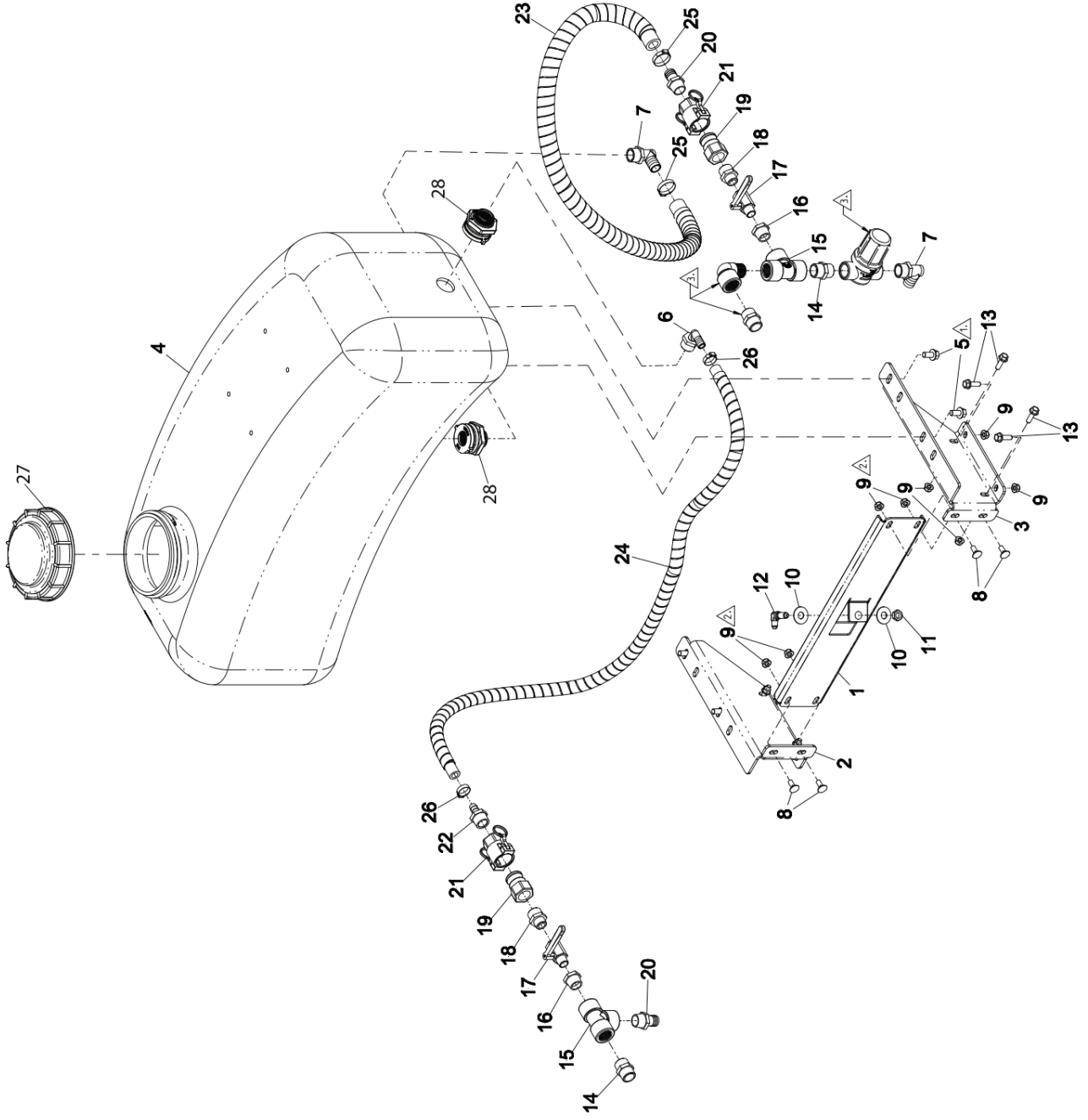
ITEM	PART NUMBER	DESCRIPTION	QTY
1	135-6640	ISM-TANK, ISO, 7GAL	1
2	135-6274	SCREW-HHF [3/8-16 X 3/4, SER.FLG, SS]	4
3	135-5759	PUMP-5.0 GPM	1
4	126-0961	FITTING-ELBOW, 3/4 QD X 1/2 BARB	2
5	132-7706	ELBOW-90 DEG, 3/4" NPT	1
6	41969	REDUCER-BUSHING, PLASTIC	1
7	120-8671	HOSE BARB-1/2", LOW PRESSURE	1
8	135-6598	FITTING-STRAIGHT [BARB-B, NPTF-12]	2
9	135-5765	STRAINER-INLINE [3/4, NPT, PP-50]	1
10	135-5736	VALVE-THROTTLE [M23520-3/4-PP]	1
11	135-5742	FITTING-NIPPLE [3/4 X 1/2]	1
12	135-6643	FITTING-TEE, W/GAUGE PORT [NPTF-8F, NPTF-4F]	1
13	120-8673	FITTING-ELBOW-HOSEBARB	1
14	135-5743	FITTING-REDUCER [1/2 - 1/4]	1
15	135-6644	HOSE, ISO TANK - [0.5 ID X 3]	1
16	135-6645	HOSE, ISO TANK INT./R [0.5 ID X 9]	1
17	135-6245	GUARD-PUMP, ISO	1
18	135-6646	HOSE, ISO TANK INT./R [0.5 ID X 10]	1
19	135-5740	GAUGE	1
20	135-6612	ISO SPRAY HOSE, COILED [0.25 ID X 15']	1
21	135-5773	GUN-SPRAY, SPOT	1
22	135-5778	TIP-SPRAY, #12 SPOT	1
23	135-6608	SCREW-PTH [1/4-20 X 1.25, SS]	4
24	135-6628	BLOCK-TERMINAL	1
25	135-6630	HARNES-WIRE, JUMPER	1
26	135-6629	SCREW-HWH [#10-24 X 1.00, SER.FLG, SS]	2
27	100-8469	SWITCH-ROCKER	1
28	135-6648	ACC. HARNES	1
29	135-6342	NUT-HEX FLANGE [10-24, NYLOC, SS]	2
30	135-5692	CLAMP-OETIKER, .67 [22.6MM]	6
31	135-5916	CAP-TANK	1
32	126-4393	FITTING-BULKHEAD [3/4" NPT/TANK]	2

NOTES:
 1. APPLY PIPE SEALANT (135-6568) TO ALL PIPE THREADS BEFORE INSERTION.

 USE LOCTITE 243.



30 Gallon Max Auxiliary Tank

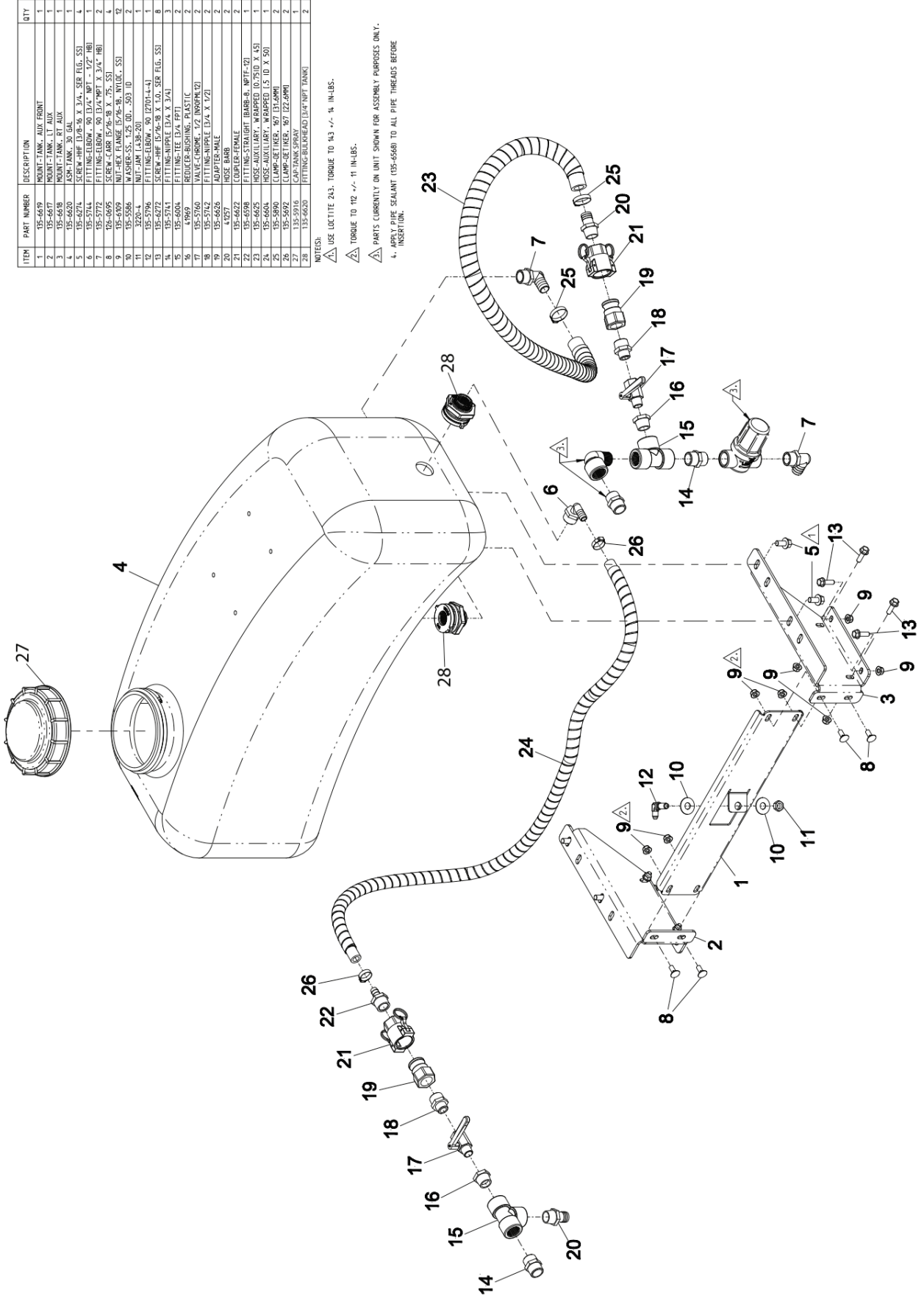


ITEM	PART NUMBER	DESCRIPTION	QTY
1	135-6619	MOUNT-TANK, AUX FRONT	1
2	135-6617	MOUNT-TANK, LT AUX	1
3	135-6618	MOUNT-TANK, RT AUX	1
4	135-6620	ASM-TANK, 30 GAL	1
5	135-6274	SCREW-HHF [3/8-16 X 3/4, SER FIG. SS]	4
6	135-5744	FITTING-ELBOW, 90 [3/4" NPT X 1/2" HB]	1
7	135-5772	FITTING-ELBOW, 90 [3/4" NPT X 3/4" HB]	2
8	26-0695	SCREW-LARR [5/16-18 X .75, SS]	4
9	135-6109	NUT-HEX FLANGE [5/16-18, NYLOC, SS]	12
10	135-5586	WASHER-SS, 1.25 OD, .503 ID	2
11	320-4	NUT-JAN [4.38-20]	1
12	135-5796	FITTING-ELBOW, 90 [2701-4-4]	1
13	135-6272	SCREW-HHF [5/16-18 X 1.0, SER FIG. SS]	8
14	135-5741	FITTING-NIPPLE [3/4 X 3/4]	3
15	135-6004	FITTING-TEE [3/4 FPT]	2
16	47969	REDUCER-BUSHING, PLASTIC	2
17	135-5760	VALVE-CHROME 1/2 [NOOPM12]	2
18	135-5742	FITTING-NIPPLE [3/4 X 1/2]	2
19	135-6626	ADAPTER-MALE	2
20	47257	HOSE BARB	2
21	135-6622	COUPLER-FEMALE	2
22	135-6598	FITTING-STRAIGHT [BARB-6, NPTF-12]	1
23	135-6625	HOSE-AUXILIARY, WRAPPED [0.75ID X 4.5]	1
24	135-6604	HOSE-AUXILIARY, WRAPPED [1.5 ID X 50]	1
25	135-5690	CLAMP-BETTIKER, 167 [31.6MM]	2
26	135-5692	CLAMP-BETTIKER, 167 [22.6MM]	2
27	135-5916	CAP-TANK-SPRAY	1
28	135-6620	FITTING-BULKHEAD [3/4" NPT TANK]	2

NOTES:

- ▲ USE LOCTITE 243. TORQUE TO ± 4.3 +/- 14 IN-LBS.
- ▲ TORQUE TO ± 12 +/- 11 IN-LBS.
- ▲ PARTS CURRENTLY ON UNIT SHOWN FOR ASSEMBLY PURPOSES ONLY.
- 4. APPLY PIPE SEALANT (135-6568) TO ALL PIPE THREADS BEFORE INSERTION.

30 Gallon Intermediate Auxiliary Tank

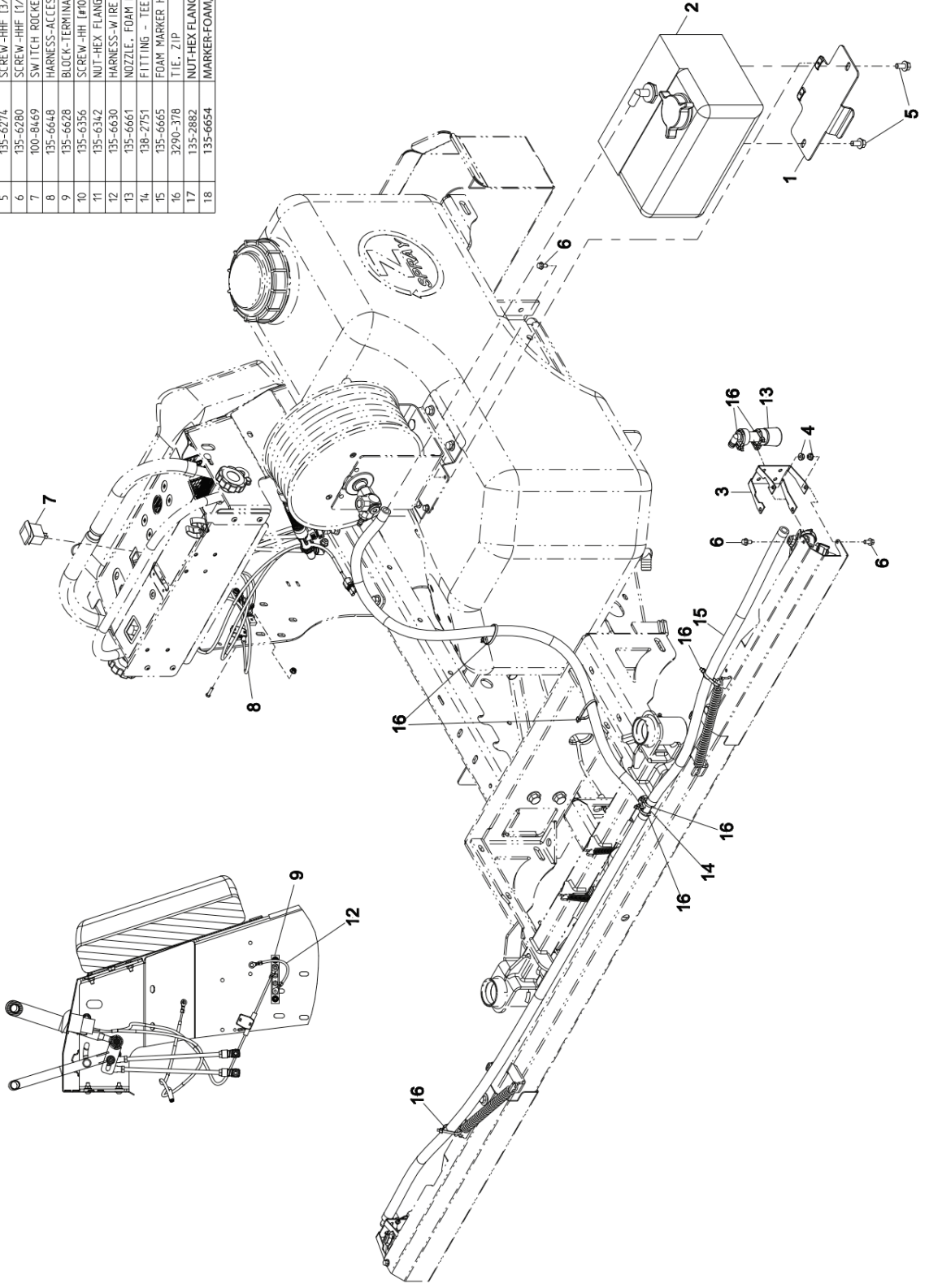


ITEM	PART NUMBER	DESCRIPTION	QTY
1	135-6619	MOUNT-TANK, AUX FRONT	1
2	135-6617	MOUNT-TANK, LT AUX	1
3	135-6618	MOUNT-TANK, RT AUX	1
4	135-6620	CLAMP-BELT	1
5	135-6624	SCREW-HRF 1/8" X 3/4" X 3/4" SER FLG, SS	4
6	135-5744	FITTING-ELBOW, 90 D/A, MPT X 3/4" HBI	1
7	135-5772	FITTING-ELBOW, 90 D/A, MPT X 3/4" HBI	2
8	706-0695	SCREW-CORR 1/8" X 3/4" X .75" SS	4
9	135-6089	NUT-HEX FLANGE 1/8" X 3/4" X .75" SS	2
10	135-6090	NUT-HEX FLANGE 1/8" X 3/4" X .75" SS	2
11	3200-4	NUT-AM 1/8" X 3/4" X .75" SS	1
12	135-5796	FITTING-ELBOW, 90 D/A, MPT X 3/4" HBI	1
13	135-6672	SCREW-HRF 1/8" X 3/4" X 3/4" SER FLG, SS	8
14	135-5741	FITTING-NIPPLE 1/4" X 3/4"	3
15	135-6004	FITTING-TEE 1/4" FLSIC	2
16	135-5760	VALVE-CHROME, 1/2" INSGHML2	2
17	135-5742	FITTING-NIPPLE 1/4" X 1/2"	2
18	135-6626	ADAPTER-MALE	2
19	41977	HOSE BARB	2
20	135-6622	COUPLER-FEMALE	2
21	135-6623	HOSE-AUXILIARY, WRAPPED 10.75(D X 4.5)	1
22	135-6625	HOSE-AUXILIARY, WRAPPED 1.5 (D X 5.0)	1
23	135-6604	HOSE-AUXILIARY, WRAPPED 1.5 (D X 5.0)	1
24	135-5890	CLAMP-BELT (KER, 97) 1.5(D X 5.0)	2
25	135-5692	CLAMP-BELT (KER, 97) 1.5(D X 5.0)	2
26	135-5916	CAP-TANK SPRAY	2
27	135-6620	FITTING-BULBHEAD [CAP-TANK]	1
28	135-6620	FITTING-BULBHEAD [CAP-TANK]	1

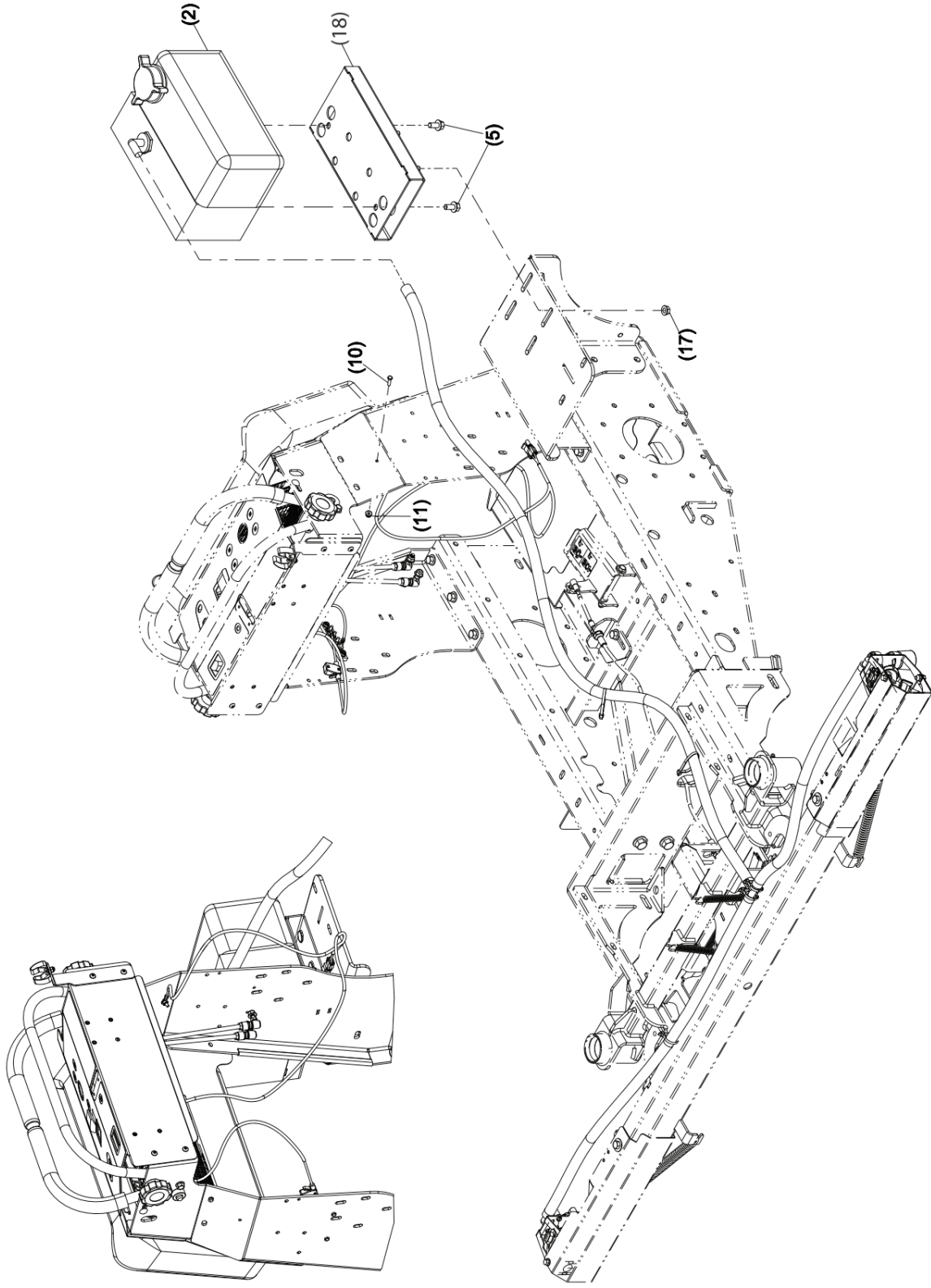
NOTES:
 ▲ USE LOCTITE 243. TORQUE TO $M3 \pm .1$ IN-LS.
 ▲ TORQUE TO $1/2 \pm .1$ IN-LS.
 ▲ PARTS CURRENTLY ON UNIT SHOWN FOR ASSEMBLY PURPOSES ONLY.
 4- APPLY PIPE SEALANT (135-6568) TO ALL PIPE THREADS BEFORE INSERTION.

Foam Marker

ITEM	PART NUMBER	DESCRIPTION	QTY
1	135-6638	MARKER-FOAM, MOUNT (WELDI) MAX	1
2	135-6634	SYSTEM-FOAM MARKER, 1 GALLON	1
3	135-6639	BRACKET, NOZZLE	2
4	135-6108	NUT-HEX FLANGE (1/4-20, NYLOC, SS)	4
5	135-6274	SCREW -HHF (3/8-16 X 3/4, SER FLG, SS)	2
6	135-6280	SCREW -HHF (1/4-20 X 1/2, SER FLG, SS)	6
7	100-8469	SWITCH ROCKER	1
8	135-6648	HARNES-ACCESSORY	1
9	135-6628	BLOCK-TERMINAL	1
10	135-6356	SCREW -HH (1/4-24 X 3/4, SS)	2
11	135-6342	NUT-HEX FLANGE (10-24, NYLOC, SS)	2
12	135-6630	HARNES-WIRE, JUMPER	1
13	135-6661	NOZZLE, FOAM MARKER	2
14	138-2751	FITTING - TEE, 1/2 BARB	1
15	135-6665	FOAM MARKER HOSE (0.5 ID X 12')	1
16	3290-378	TIE, ZIP	10
17	135-2882	NUT-HEX FLANGE (3/8-16, NYLOC, SS)	4
18	135-6654	MARKER-FOAM, MOUNT (WELDI) INT & JR	1



Foam Marker (continued)





(765) 482-0045

920 Hendricks Dr • Lebanon, In 46052