



SIDE SPREAD CONTROL

SIDESPREAD CONTROL™

Patent U.S. 10,993,368

Your EarthWay spreader includes a patented feature to prevent fertilizer from being spread to the left side. To activate this feature, slide the lever below the hopper to the back (if standing behind the spreader) and position the left wheel 6"-12" from your sidewalk or border. This will not waste fertilizer like competitor designs that leave 7X the fertilizer inside the wheels from blocking material leaving the impeller.

ASSEMBLY

For assembly, flip up handle and tighten each wing nut to hold handle in position.

SPREADER RATE SETTINGS

LBS PER 1000 SQUARE FEET	GRASS SEED	FERTILIZER SGN 240 (3/32")	SAND SGN 150 (1/16")
1 LB		9	7
2 LB	14	13	10
3 LB	16	16	13
4 LB	18	20	14
5 LB	20	22	16
8 LB		28	22

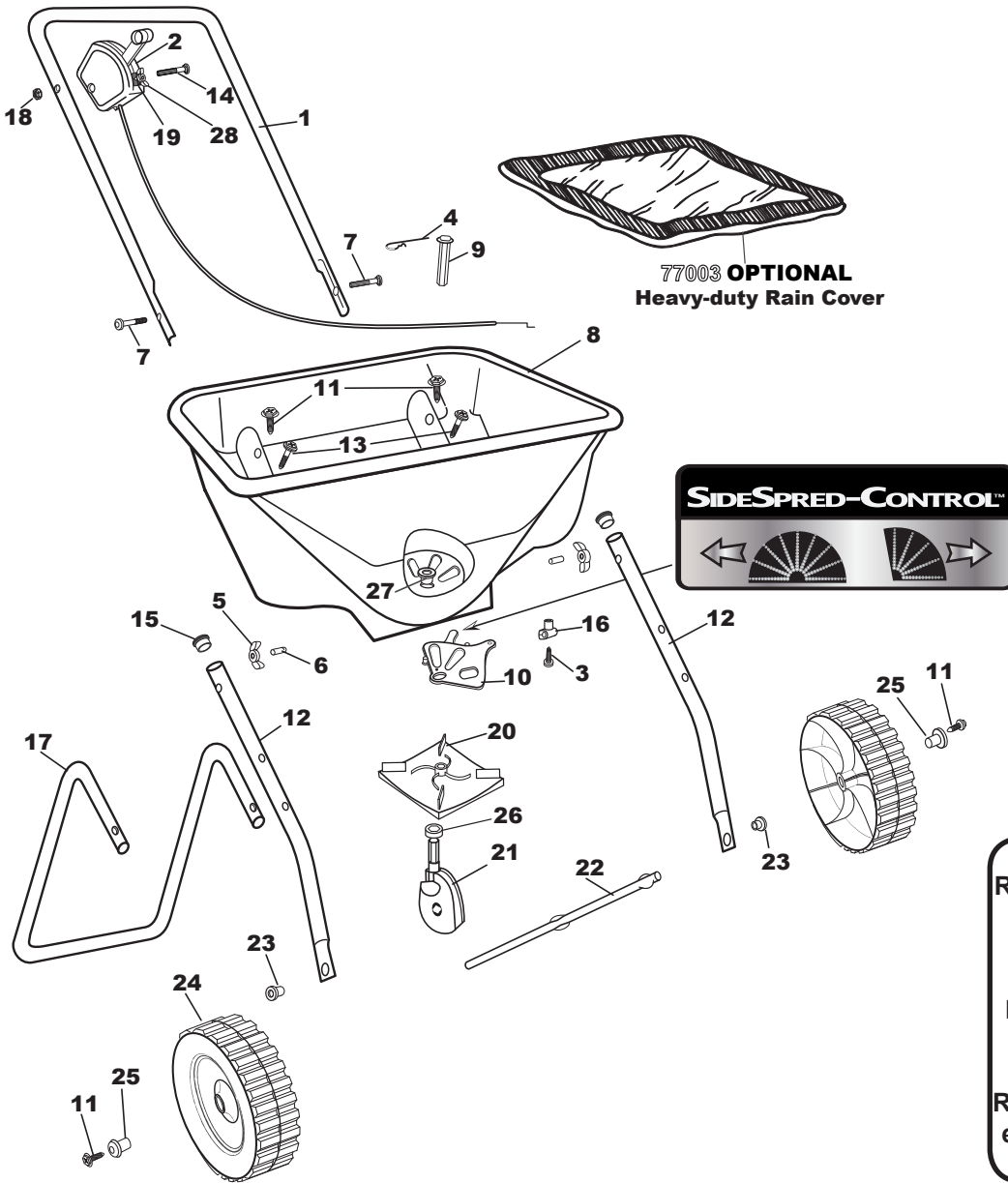
CUSTOMER SERVICE

SUPPORT@EARTHWAY.COM | www.EARTHWAY.com | 1009 Maple Street, Bristol, IN 46507

OPERATING INSTRUCTIONS

Before filling hopper, become familiar with the operation of this spreader.

- Obtain proper setting for material to be used from the SETTING MATRIX included with this spreader.
- Move stop bolt on rate gauge assembly to the proper setting and tighten.
- While pushing spreader forward, push control lever forward to the stop bolt. To stop, pull lever back to close flow holes before you stop moving.
- When finished, empty any remaining material from hopper.
- Thoroughly wash spreader and allow to dry before storing.
- To prevent corrosion, spray a light oil or Fluid Film inside the tubing of the chassis and on all metal parts.
- If using Rock Salt, to prevent damage to the gearbox remove salt from the hopper daily. Rock Salt will reconstitute back into a solid block if left in the hopper overnight and will damage your gearbox if operated with the salt in place.



Manufactured by:
1009 Bristol, IN
46507 Phone:
574-848-7491

WARNING
Remove agitator when using Rock Salt to prevent gearbox damage
AVERTISSEMENT
Retirer l'agitateur Lors de l'utilisation de sel gemme pour éviter d'endommager la boîte de vitesses
ADVERTENCIA
Retire agitador Al usar sal de roca para evitar daños en la caja de cambios de prevención

2030 Parts List

KEY #	PART #	DESCRIPTION	KEY #	PART #	DESCRIPTION	KEY #	PART #	DESCRIPTION
1	25417	UPPER HANDLE	11	31141	#14 X 3/4" TYPE "AB" HWHS ZINC	21	60257	GEAR BOX ASSEMBLY
2	60515	CONTROL ASSEMBLY	12	25721	LOWER HANDLE 2030	22	23513	AXLE
3	31136	#8 X 1 PHPS DEEP THREAD	13	31163	#14 X 1 1/2 TYPE AB HWHS ZINC	23	12197	SPACER BEARING
4	33117	AGITATOR	14	37108	1/4-20 X 1 3/4" CARRIAGE BOLT	24	12104	8" WHEEL
5	60027	WING NUT ASS'Y BLACK	15	19132	7/8" TUBE PLUG	25	12242	AXLE PLUG (BLACK)
6	70142	NUT PROTECTOR .234 ID. X .375 IL.	16	12349	LOWER HOUSING CLAMP	26	12201	DUST COVER (GEAR BOX) HEX
7	37116	1/4-20 X 2 1/4 CARRIAGE BOLT ZINC	17	25720	STAND 2030	27	12251	HOPPER BUSHING
8	60488	HOPPER ASSEMBLY	18	36305	1/4-20 HEX NUT ZINC	28	32106	10-24 WING NUT ZINC
9	12275	AGITATOR SHAFT	19	12222	INDICATOR-BROADCAST	OPTIONAL	77003	HEAVY DUTY RAIN COVER
10	12279	SHUT OFF PLATE	20	12255	IMPELLER			

HOW TO DETERMINE THE SETTING RATE




Establishing a Setting Rate



Step 1: Use Chart 1 to estimate the number of LBS/1,000 square feet of coverage (Example: 20LB bag with 10,000 square foot coverage = 2.0LBS/1,000 square feet)

Step 2: Find the closest LBS/1,000 square feet in Chart 2 that you estimated using Chart 1 (Example: 2.0LBS/1,000 square feet = Spreader Setting of 13)

CHART 1		BAG COVERAGE IN SQUARE FEET		
		5,000	10,000	15,000
BAG WEIGHT	5 LBS.	1.0	0.5	0.3
	10 LBS.	2.0	1.0	0.7
	15 LBS.	3.0	1.5	1.0
	18 LBS.	3.6	1.8	1.2
	20 LBS.	4.0	2.0	1.3
	25 LBS.	5.0	2.5	1.7
	30 LBS.	6.0	3.0	2.0
	35 LBS.	7.0	3.5	2.3
	40 LBS.	8.0	4.0	2.7
	45 LBS.	9.0	4.5	3.0
50 LBS.	10.0	5.0	3.3	

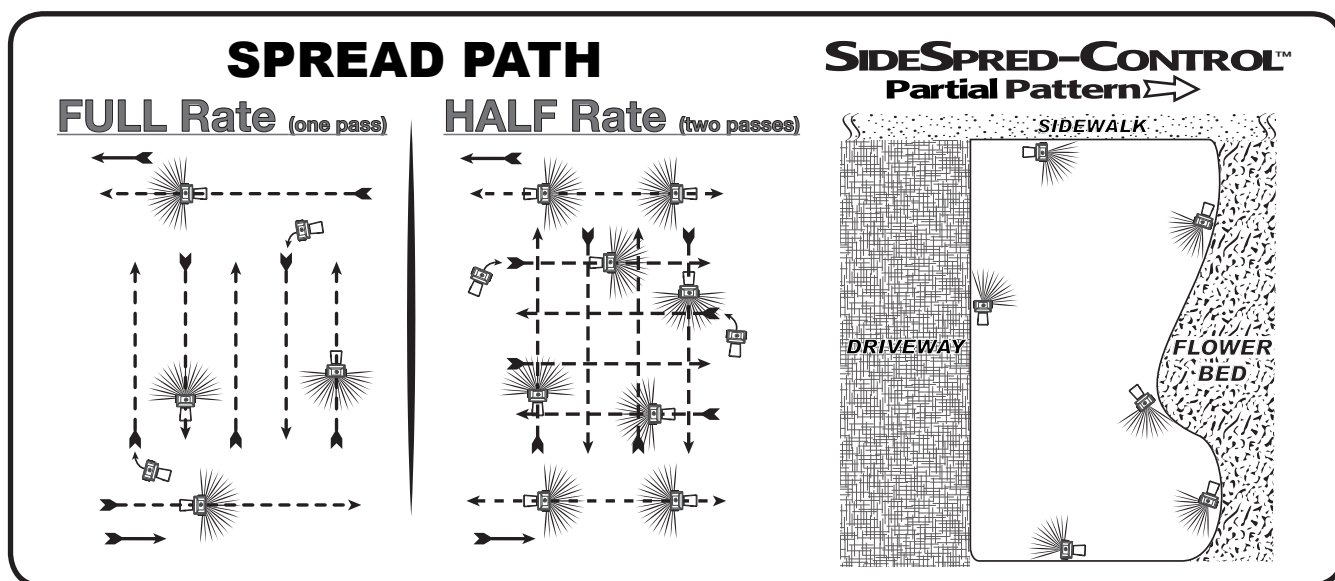
CHART 2		
GRAMS/SQ METER	LBS./1,000 SQ FT	SPREADER SETTING
5 Grams	1.0 LBS.	11
10 Grams	2.0 LBS.	13
15 Grams	3.0 LBS.	14
20 Grams	4.0 LBS.	16
25 Grams	5.0 LBS.	17
30 Grams	6.0 LBS.	18
35 Grams	7.0 LBS.	19
40 Grams	8.0 LBS.	20
45 Grams	9.0 LBS.	22
50 Grams	10.0 LBS.	23

SPREAD WIDTHS FOR DIFFERENT PARTICLE SIZES			
Particle Size	English	Metric	
 Small/Fine (Sand)	5-7ft.	1.5-2.1m	
 Medium (Half BB)	7-9ft.	2.1-2.7m	
 Large (Full BB)	9-12ft.	2.7-3.7m	

SPREAD WIDTH FOR DIFFERENT SIZE GRASS SEED			
Seed Size	English	Metric	
Fine 	5-7ft	1.5-2.1m	
Coarse 	7-10ft	2.1-3.1m	

GRASS SEED		
GRAMS/SQ METER	LBS./1,000 SQ FT	SPREADER SETTING
10 Grams	2 LBS.	13
15 Grams	3 LBS.	14
20 Grams	4 LBS.	16
25 Grams	5 LBS.	17

The settings furnished on the Rate Setting Matrix are intended as a guide only. Variations in physical characteristics of material applied, walking speed, and roughness of ground surface may require slightly different spreader settings. Due to the above conditions, the manufacturer makes no warranty as to the uniformity of coverage actually obtained from the settings listed.



ONE YEAR WARRANTY

EarthWay Products, Inc. warrants this product free of defects in original workmanship and materials for a period of one year to the end user with the original purchase receipt. If a manufacturing non-conformance is found, EarthWay Products, Inc. at its discretion will repair or replace the part(s)/product at no charge provided the failure is not the result of incorrect installation, mishandling, misuse, tampering, or normal wear and tear as determined by EarthWay. EarthWay at its discretion may require that the part(s) or product be returned along with the original purchase receipt for examination and compliance with the terms of this warranty. Do not return any product without first receiving authorization from EarthWay Products, Inc.

To seek remedy under this warranty, contact EarthWay Products, Inc. at support@earthway.com or write to EarthWay Products, Inc. 1009 Maple Street, Bristol, IN 46507 and describe the nature of the manufacturing defect. SPECIFIC LIMITATIONS: This warranty covers only the part(s) or product; any labor charges associated with repair or replacement of non-conformances are specifically excluded. Due to the corrosive nature of most fertilizers and ice melt products, EarthWay Products, Inc. makes no warranty against and specifically excludes part(s) or product degradation or failure due to corrosion or its effects.