

DECK LIFT FITTING INSTRUCTIONS

This attachment is designed for use with all 42" and 48" decks and deck model DSD 54.

1. Remove Seat
2. Place welded main frame assembly (1) on tractor with arms facing forward and round bar just behind steering levers. Round bar should just touch levers when they are pulled fully into reverse position. Hinge bosses should be almost against the outside faces of the two lift arms.
3. Ensure round bar is square across tractor body and mark out four mounting holes. Drill holes 8.5 mm (21/64") diameter.
4. Bolt assembly on placing doublers (3,6) on inside of body to give added strength. Use three 8 x 25 and one 8 x 20 bolts, nuts and spring washers. Tighten the bolt in the horizontal plane before the other three.
5. Mark out and drill 3 holes 8.5mm (21/64") diameter as shown in illustration 2.
6. Bolt torque arm (4) to body placing doubler (5) behind body for added strength. Use three M8 x 25 bolts, nuts and spring washers. Note: When fitting to model MC tractor, it will be necessary to turn the circuit breaker through 90 degrees to fit notched clearance in doubler plate.
7. Put lift frame arms in downward position. Sit lift handle (8) on guard with operator handle end turning upwards. Put M10 heavy washer on M10 x 40 bolt then slide bolt through bottom bush on lift handle and screw into link arm on main frame. Secure with M10 nut. Tighten Nut against arm but make sure handle is still free to operate.
8. Slide link (7) onto torque arm (4) positioned so grease nipple is facing forward when link arm upward. Position so the two link arms are directly one above the other. Put M 10 heavy washer on M10 x 40 bolt then slide bolt through bush and screw into link. Secure with M10 nut. Tighten nut against Arm but make sure handle can still operate.
9. Operate lift handle (8) to check action. When handle lifted and pushed forward lift arms should raise and lock just over centre. When handle lowered, lift handle should go down to rest on guard and lift arms should be almost touching tractor body.
10. Put shackle through one end of chain and shackle to lift hole in deck carrier frame. Put Karabiner through other end of chain and attach to lift arm. Repeat on other side.
11. IMPORTANT - Grease three nipples before use - shipped dry.
12. Refit seat. If the front edge of the standard seat fouls on the main cross shaft, tap front edge of seat back a little with a soft faced hammer.

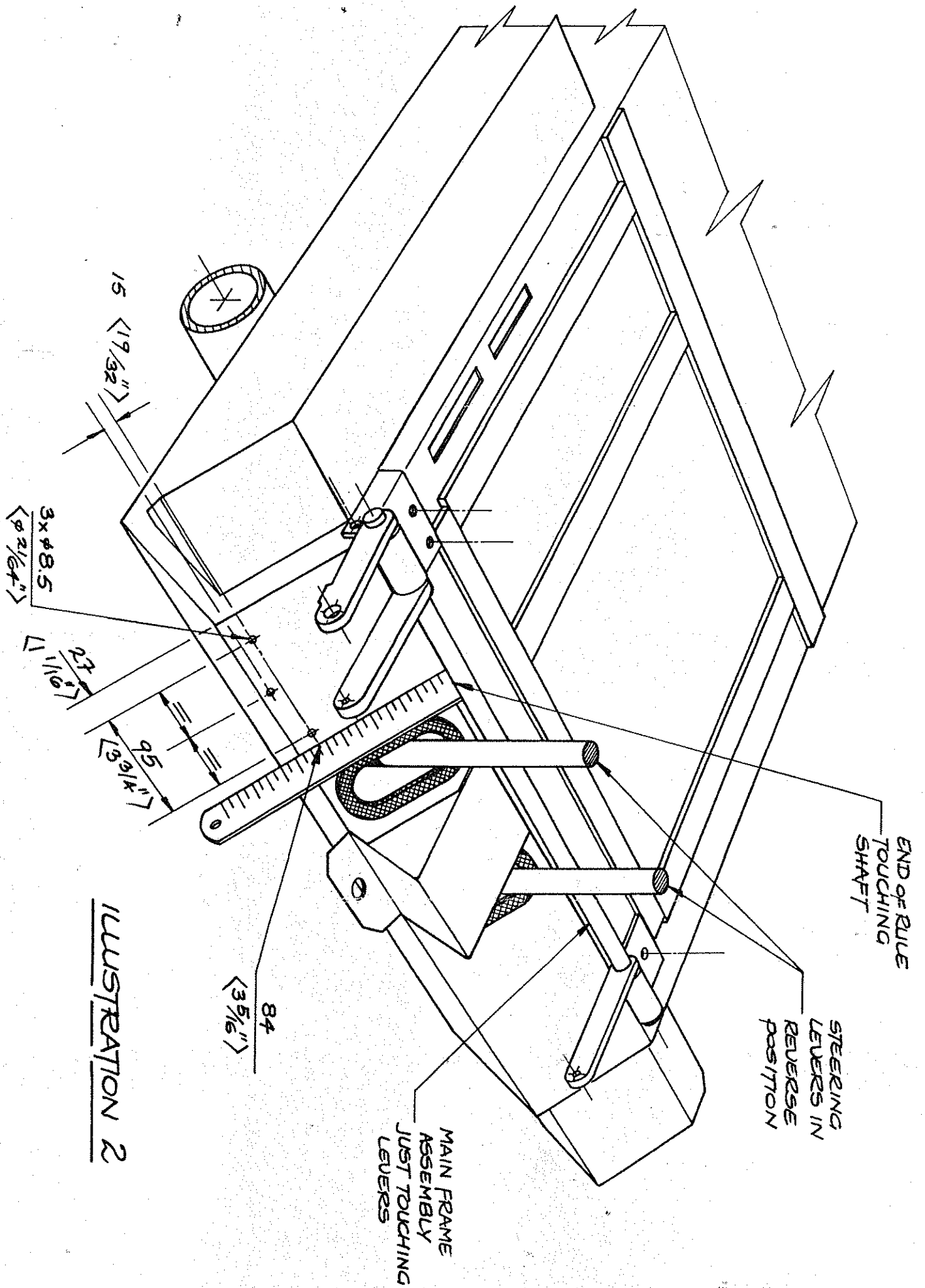
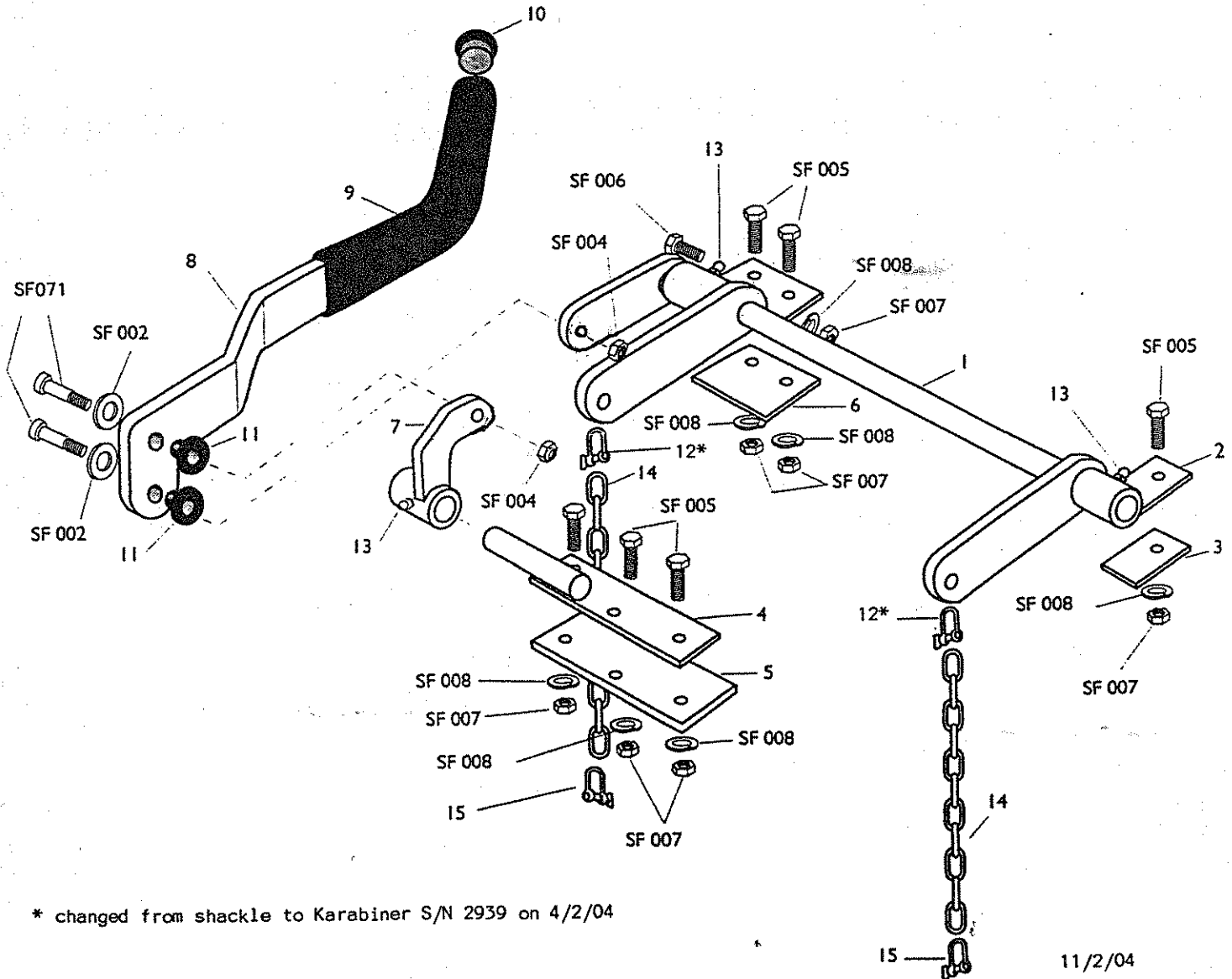


ILLUSTRATION 2

DECK LIFT PARTS DIAGRAM

ITEM	PART No.	DESCRIPTION	No. REQ'D.
1	900	Main Frame Welded Assembly	1
2	901	Hinge Bracket left hand	1
3	902	Doubler, Left hand hinge	1
4	903	Torque arm	1
5	904	Doubler, Torque arm	1
6	905	Doubler, Right hand hinge	1
7	906	Link	1
8	907	Lift Handle	1
9	908	Foam Grip	1
10	909	Cap	1
11	910	Bush, shouldered	2
12	920	Karabiner	2
13	912	Nipple, short bodied, straight	3
14	913	Chain	2
15	914	Shackle	2
SF 071	10 X 40 mm	Boit	2
SF 002	10 mm	Heavy Washer	2
SF 004	10 mm	Nuts	2
SF 005	8 X 25 mm	Bolt	6
SF 006	8 X 20 mm	Cap Screw	1
SF 007	8 mm	Nuts	7
SF 008	8 mm	Spring Washer	7



* changed from shackle to Karabiner S/N 2939 on 4/2/04

DECK LIFT PACKING LIST

ITEM	PART No.	DESCRIPTION	No. REQ'D.
1	900	Main Frame Welded Assembly	1
2	901	Hinge Bracket left hand	1
3	902	Doubler, Left hand hinge	1
4	903	Torque arm	1
5	904	Doubler, Torque arm	1
6	905	Doubler, Right hand hinge	1
7	906	Link	1
8	907	Lift Handle	1
9	908	Foam Grip	1
10	909	Cap	1
11	910	Bush, shouldered	2
12	920	Karabiner	2
13	912	Nipple, short bodied, straight	3
14	913	Chain	2
15	914	Shackle	2
	SF 071	10 X 40 mm Bolt	2
	SF 002	10 mm Heavy Washer	2
	SF 004	10 mm Nuts	2
	SF 005	8 X 25 mm Bolt	6
	SF 006	8 X 20 mm Cap Screw	1
	SF 007	8 mm Nuts	7
	SF 008	8 mm Spring Washer	7

