

Installation Instructions

Headlight Kit

Part No. 5600647

Fits IS600Z, IS700Z, Champion XT, and Citation XT Models

Kit Contents			
Part No.	Qty.	Description	
5021029	9	Tie, Self-Locking, 12"	
5410587	1	Wire Harness, Headlight	
1703799	1	Switch, Headlight	
5025010X12	2	Bolt, 1/4-20 X 1-1/2, GD5	
5025391	2	Nut, 1/4-20 Hex Nylock Flange	
Part No.	Qty.	Description	
5102581	2	Spacer, .33 X .63 X .50, CZ	
5417573	2	LED Headlight	
5022222	1	Ring, Switch Retainer	
5025154	2	Washer, 1/4 SAE	

⚠ WARNING



Remove the ignition key prior to performing maintenance on the unit.

Before beginning any service work turn off the PTO, engage the parking brake, turn off the ignition, remove the ignition key, and disconnect the spark plug wire(s).

Installing the Headlights

1. Install the headlights (**A, Figure 1**) to the frame of the unit, by routing the 1/4-20 X 1-1/2" bolts (**B**), and 1/4 SAE washers (**C**) through the headlights, the spacers (**D**), the frame of the unit and securing with the 1/4 hex nylock flange nuts (**E**).

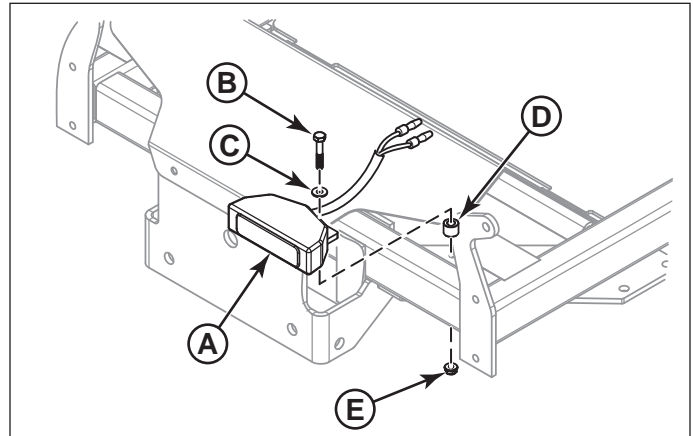


Figure 1. Installing the Headlights

Installing the Headlight Switch

1. Using a 5/32" allen wrench, remove the three allen head screws (**A, Figure 2**) securing the control panel (**B**) to the right-hand fender tank.
2. Lift the control panel off of the tank. Remove the hole plug (**C**) and, if equipped, the o-ring (**D**) from the control panel and discard both components.
3. Install the headlight switch (**E**) into the control panel. From the bottom side install the switch retainer ring (**F**).

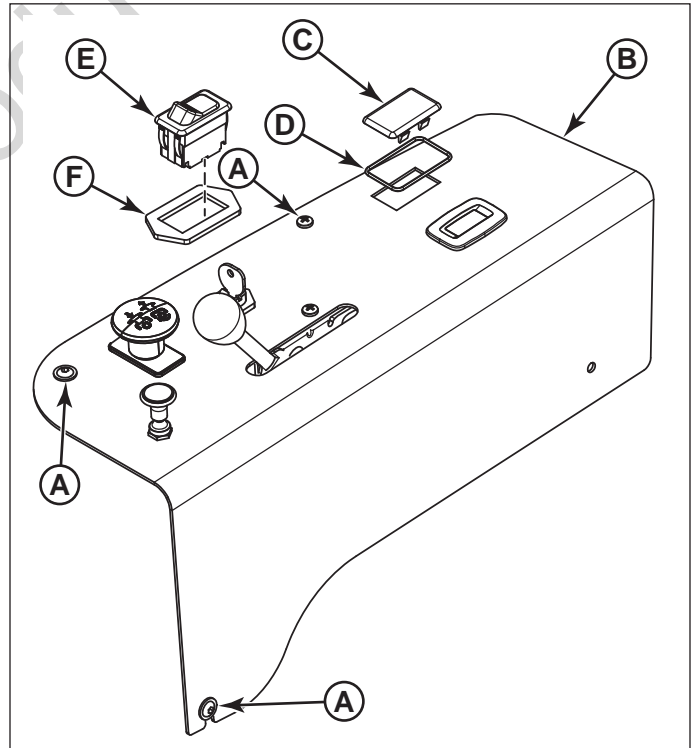


Figure 2. Installing the Headlight Switch

Installing the Wire Harness

1. Connect the orange/black wire (A, **Figure 3**) from the headlight wire harness to a terminal on the headlight switch (B). Connect the black wire (C) of the inline fuse holder (D) to the headlight switch.
2. **For all IS600Z & Champion XT models, and IS700Z & Citation XT models that DO NOT have the optional seat upgrade kit installed:** Connect the insulated female wire end (E) on the inline fuse holder to the unused terminal on the key switch (F).
For all IS700Z & Citation XT models that DO have the optional seat upgrade kit installed: Connect the insulated female wire end on the inline fuse holder to the insulated male wire end on the violet wire of the seat switch harness, which will be the only unused connection.
3. Reinstall the control panel and secure with the previously removed allen head screws.

4. Position the headlight wire harness (G) so it is routed as shown in Figure 3.
5. Connect the headlight wire harness to the headlights (H). For each headlight, the black wire connects to the black wire and the red wire to the orange/black wire.
6. Loosen the left-front (closest to fuel tank and seat) engine mounting nut (I).
7. Install the ring of the ground wire (J) onto the engine mount bolt and secure using the nut previously removed.
8. Loosen the hardware that secures the black vinyl coated clamps that secure to the frame, position the headlight wire harness in the clamps, and the re-secure the clamps.
9. Using the 12" self-locking ties (K) secure the wire harness to the frame of the machine.

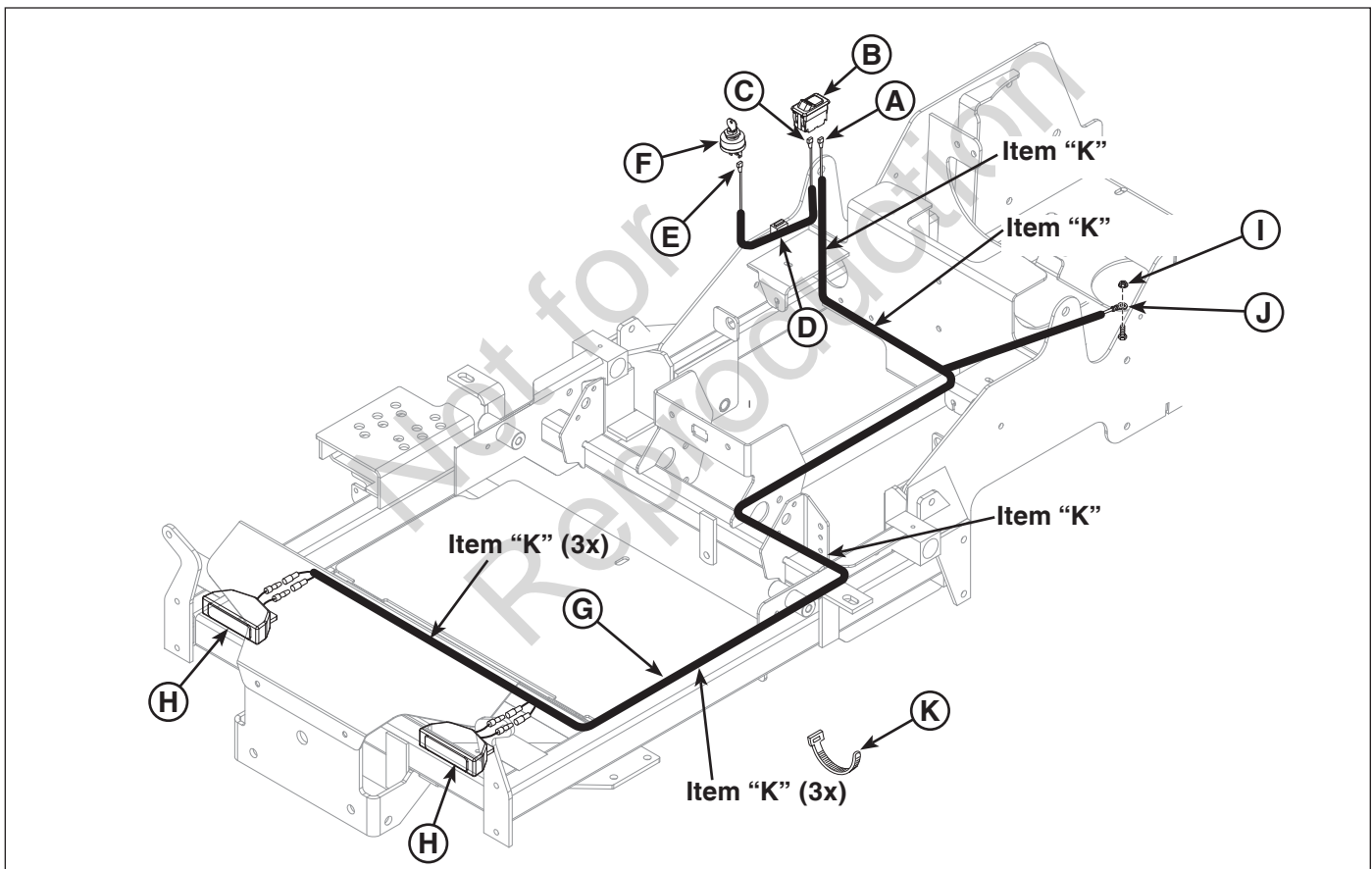


Figure 3. Installing the Headlight Wire Harness