



## POWER DUMP KIT (9.5 BUSHEL CATCHER), P/N 8620-1

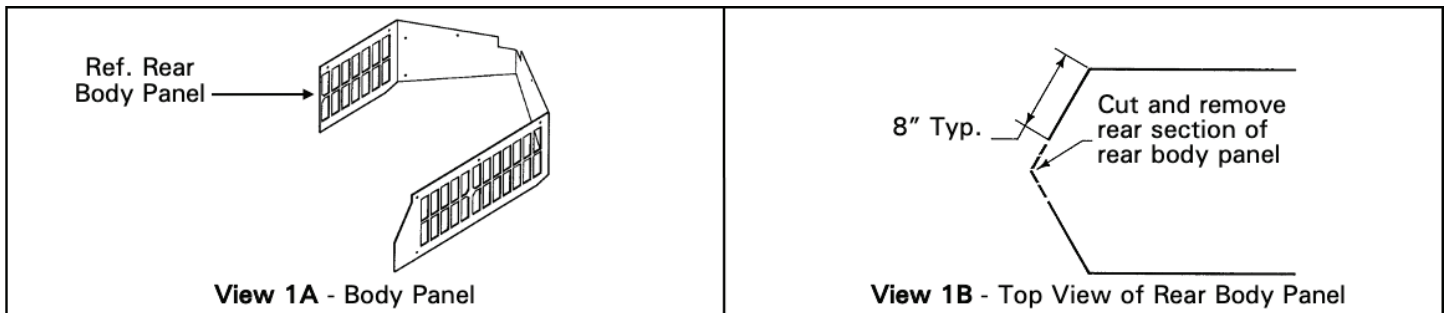
**DESCRIPTION:** This kit is offered to install the Power Dump in the field on Models MD/MT that have a 9.5 bushel catcher. The power dump affords the operator the convenience of emptying the catcher box without leaving the operator's seat by using a switch mounted to the front right of the seat.

**NOTE:** Some tractors may already have predrilled holes.

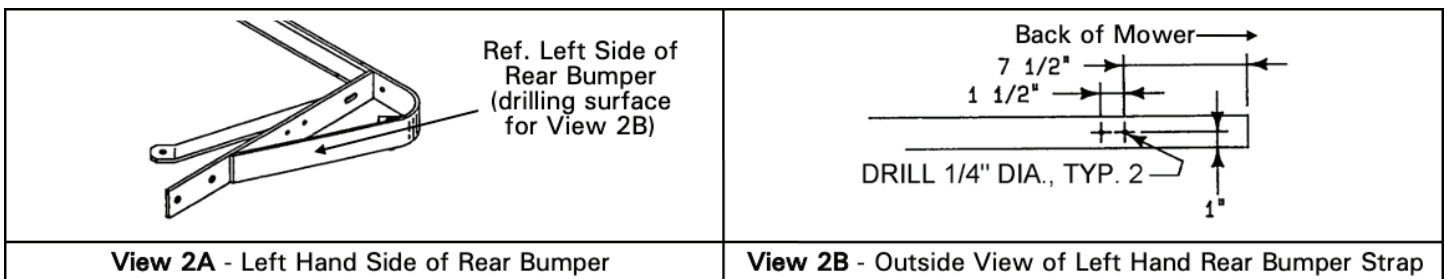
### INSTRUCTIONS:

1. Remove rear body panel (see View 1A) from catcher support frame. Cut out rear portion of body panel (see View 1B).

**NOTE:** On some tractors the body panel may already be cut as shown in View 1B.

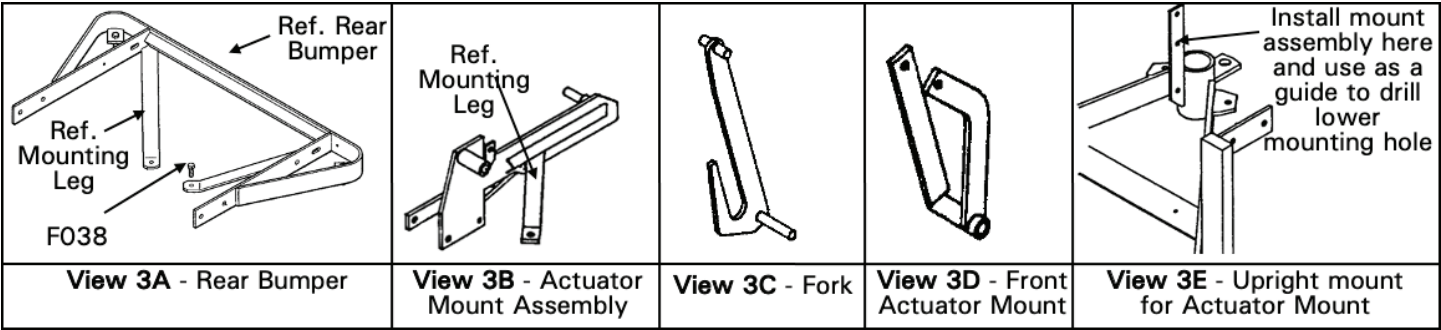


2. On Models MDD and MDG (prior to S/N 97-29676), drill two (2) 1/4" holes in the left rear bumper strap (View 2A). See View 2B for reference measurements when drilling holes. Remove coolant tank and mount in position shown in parts breakdown.

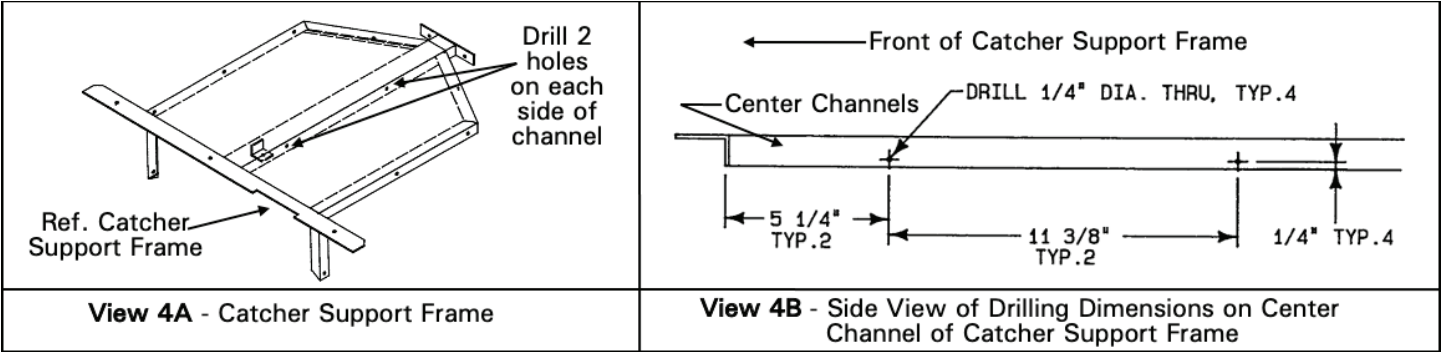


3. Remove the two (2) bolts that secure angle braces for rear bumper (see View 3A). Position the actuator mount assembly (View 3B), fork (View 3C), and front actuator mount (View 3D), as shown in parts breakdown. Attach actuator mount assembly to the upright mount on the tail wheel bearing housing (View 3E) using only the top bolt shown in parts breakdown. Using new bolts, attach mounting legs on rear bumper (that were removed in first part of this instruction) including the mounting legs for the actuator mount assembly, as shown in parts breakdown. Us-

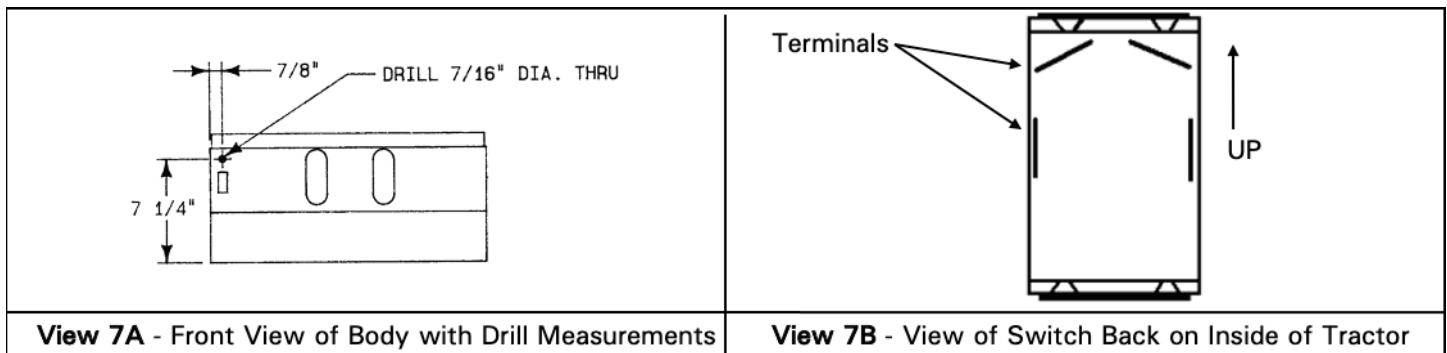
ing the lower hole as a guide, drill a 5/16" hole through the upright bar and install the lower bolt as shown in parts breakdown.



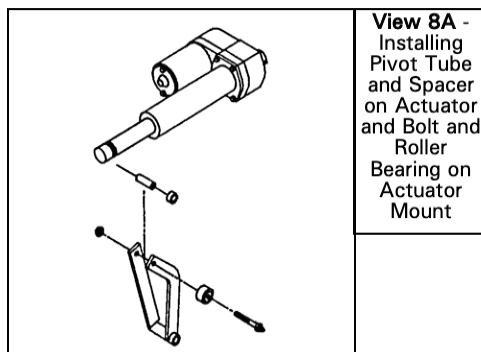
4. Drill four (4) 1/4" holes (2 on each side of channel) in the center channel of the catcher support frame (View 4A). See View 4B for reference measurements for drilling holes. Remove gas spring supporting catcher box on chassis frame and set aside.
- NOTE:** It will be necessary to support the catcher box in the open position until gas spring is reinstalled. Attach only the front of the RH channel angle and LH channel angle using hardware supplied.



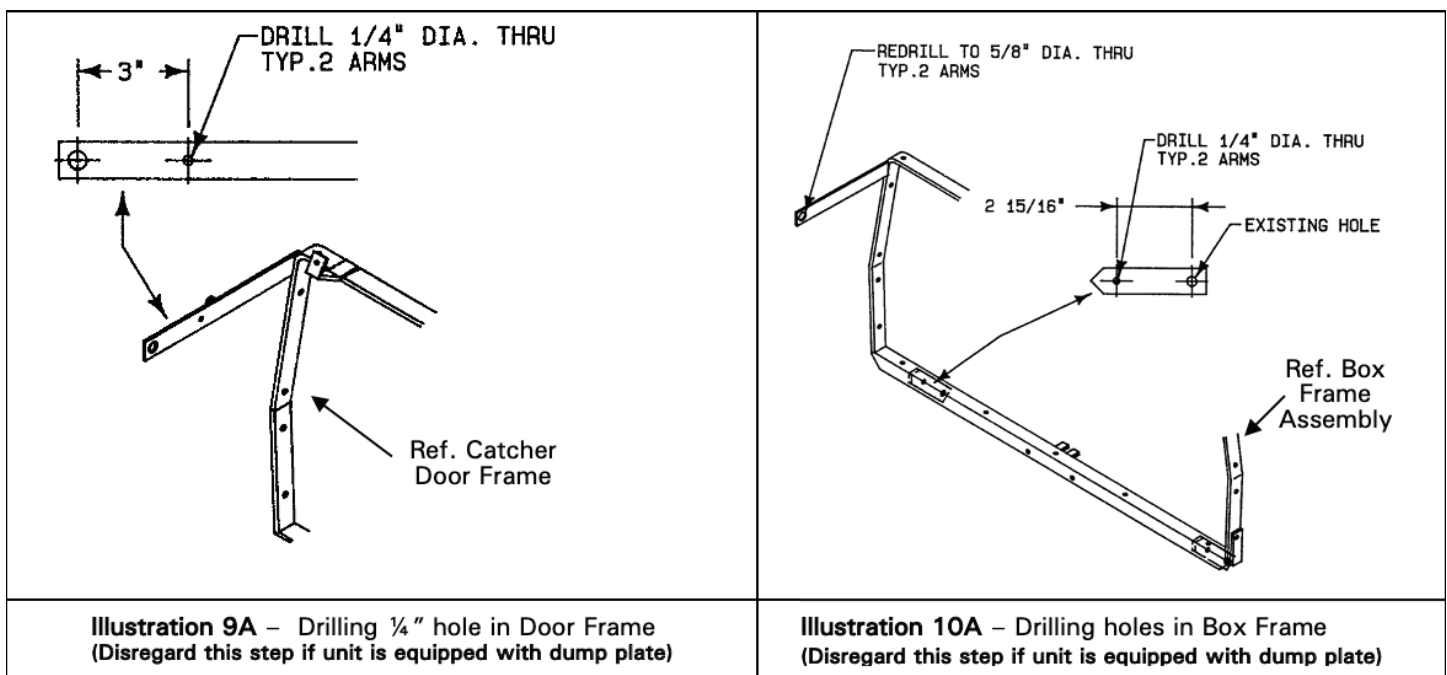
5. Install washers and roller wheels on top of fork, as shown in parts breakdown. Rotate top of fork to the rear of mower and place roller wheels into the RH and LH channel angles coming in from the bottom. Install remaining bolts at the bottom of the channel angles. Reattach gas spring that was removed in Instruction #4 to tab on LH channel angle, as shown in parts breakdown.
6. Install rear mount of linear actuator onto pin of actuator mount assembly (View 3B) and secure with F134 washer and F068 cotter pin, as shown in parts breakdown.
7. Drill a 7/16" hole in the front of body, as shown in View 7A. Mount lift control switch in front body hole. Mount switch as shown in View 7B. Install wire harness from linear actuator to lift control switch along main wire harness using wire ties provided with kit. Attach black wire to chassis ground and red wire to fused side of circuit breaker. Connect harness to control switch and actuator motor. Check operation of actuator--pushing down on switch should extend ram of actuator. Attach decal to front body next to switch.



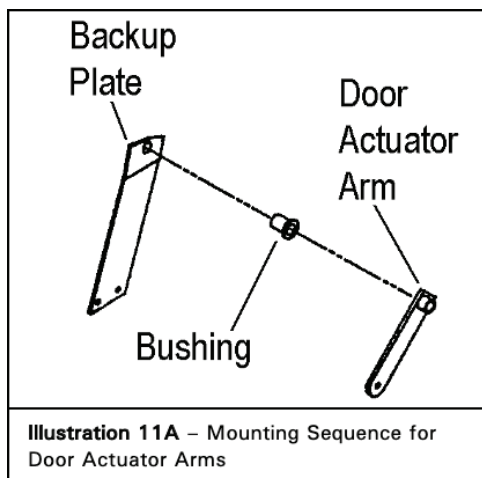
8. Extend ram of actuator to maximum length. Insert pivot tube (View 8A) and spacer (View 8A) into end of ram and position ram in front actuator mount (View 8A). Install bolt and roller bearing (View 8A). Lower catcher box and check operation of lifting action.



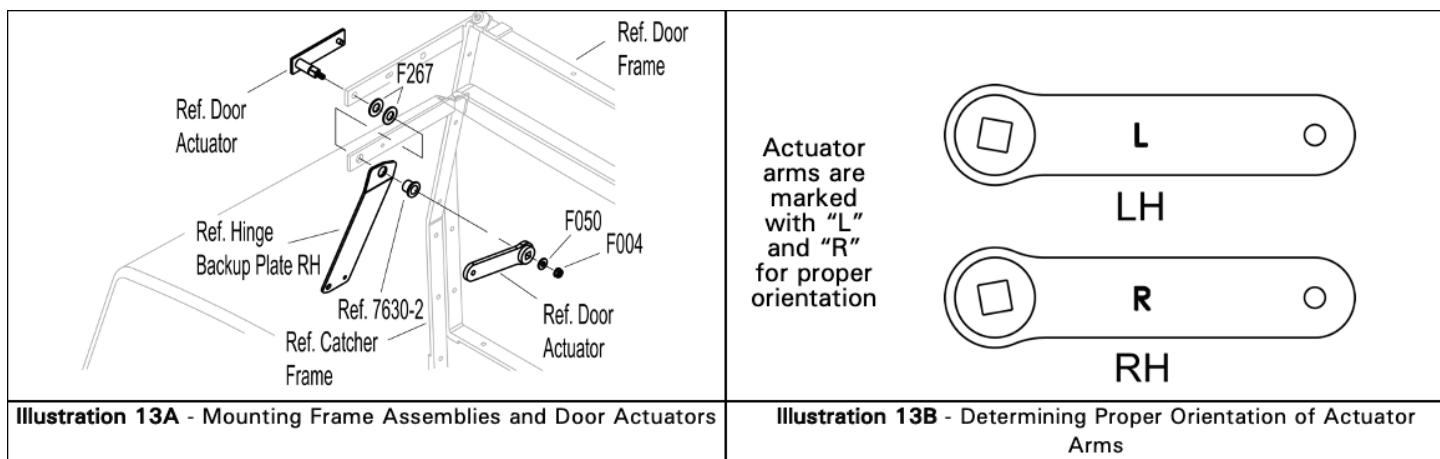
9. If needed (units not equipped with dump plate), remove door springs and remove door frame assembly from the catcher box. Drill a 1/4" hole in both door frame assembly arms, as shown in Illustration 9A. Check location of hole by inserting door actuator arms into door arms.
- NOTE:** The catcher door safety latch is not used with the power dump assembly.



10. Redrill existing door pivot hole in box frame assembly to 5/8", as shown in Illustration 10A. In some cases, a pivot bushing is installed in the frame. Remove this bushing to expose the 5/8" hole. Remove door springs and remove door frame assembly (View 9A) from the catcher box. Drill a 1/4" hole in both door frame assembly arms, as shown in View 9A. Check location of hole by inserting door actuator arms (View 9B) into door arms.  
**NOTE:** The catcher door safety latch is not used with the power dump assembly.
11. Remove hinge backup plates and install new plates, as shown in Illustration 11A.

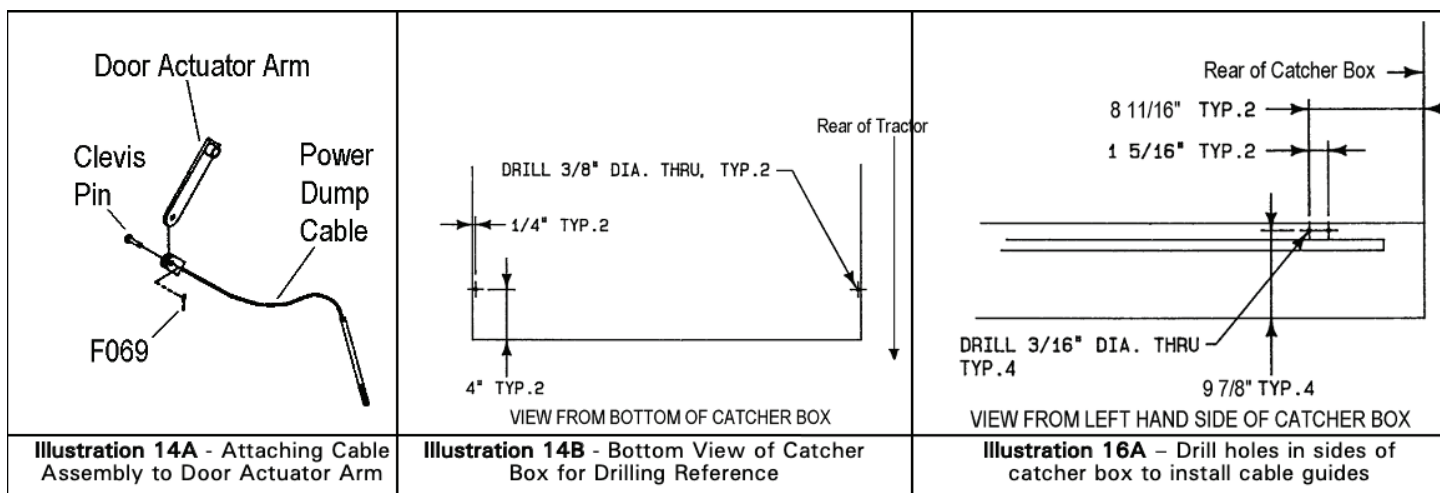


12. Install new plates and insert door pivot bushings with flange to the inside of catcher.  
**NOTE:** Hinge backup plate fasteners should be installed with bolt heads inside of catcher and nuts outside against spring hook.
13. Realign door frame assembly to mounting frame assembly and install door actuators. Attach door actuator arms to pivot shaft of door actuators, as shown in Illustration 13A.  
**NOTE:** The door actuator arms are installed so they are parallel to the baffle screen when the catcher door is closed. Look through the baffle screen to make certain of correct position. See Illustration 13B for door actuator arm identification (arms are marked for identification). Reinstall gas springs on door arms.

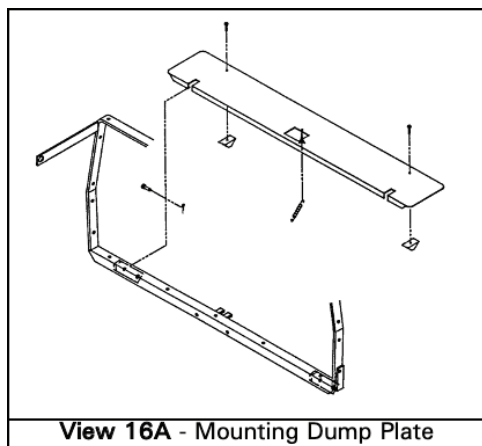


14. Attach cable assembly to door actuator arms with clevis pin, as shown in Illustration 14A. Drill two 3/8" holes in the grass catcher bottom, as shown in Illustration 14B and install threaded end of cable assembly through each hole. Attach ball joints to cable ends. Attach ball joints to bum-

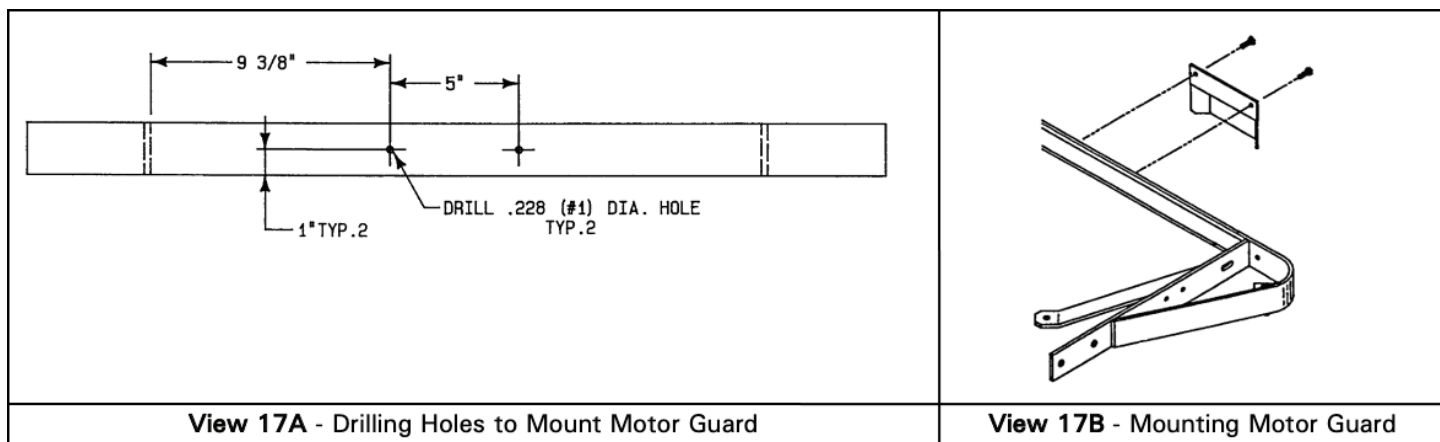
per strap, as shown in parts breakdown.



15. Tilt the catcher to the full back position using the dump switch. Check the tension of both cables. The tension should be equal. Adjust accordingly with the ball joints. Tighten the jam nuts.
16. Drill holes in both sides of the catcher box (as shown in Illustration 16A) to install cable guides inside catcher.



17. Drill two (2) holes on the rear bumper (View 17A) using a #1 drill bit (.228) and mount motor guard (View 17B).



18. Drill a 1/4" hole in each catcher pivot mount arm (refer to View 10A for drilling measurements.) Attach catcher dump plate to catcher pivot mount arms using clevis pin (View 16A). Attach dump plate slides to dump plate assembly (View 16A). Attach spring to dump plate assembly, as shown in parts breakdown.
19. Reinstall rear body panels and catcher door springs using existing hardware.

**PARTS LIST:**

ITEM NO.	PART NO.	DESCRIPTION	QTY REQ'D	
1	7620-9	Roller Wheel	2	
2	7628-1	Channel Angle/RH	1	
3	7629	Channel Angle/LH	1	
4	7622	Wire Harness/PD/7.0/9.5	1	
5	7623-2	Power Dump Cable/9.5	2	
6	5552	Ball Joint (1/4-28)	2	
7	7613-2	Door Actuator	2	A
8	7620-3	Pivot Bushing (1/2 x 9/16)	2	
9	7612-4	Door Actuator Arm/RH	1	
10	5522-10	Hinge Backup Plate/LH/PD	1	
11	5522-20	Hinge Backup Plate/RH/PD	1	
12	7620-6	Cable Guide	2	
13	7630-3	Ram Pivot & Spacer	1	B
14	7721-1	Linear Actuator (13.898)	1	
15	6623	Toggle Switch	1	
16	7624	Sealed Needle Bearing	1	
17	6623-1	Switch Boot	1	
18	7610-5	Extension Spring (1/4 x 2-7/8)	1	
19	7523-2	Clevis Pin W/Hole (1/4 x 5/8)	2	

20	7625	Fork	1
21	7627	Front Actuator Mount	1
22	7636-1	Actuator Mount/9.5	1
23	5830	Grease Fitting	1
24	7624-1	Roller Bearing Bolt	1
25	7612-3	Door Actuator Arm/LH	1
26	7633	Decal, Power Dump	1
27	8620-5	Guard, Power Dump Motor/9.5	1
28	5975-7	Cable Tie (50# x 11")	1
29	5975-3	Cable Tie (50# x 7")	5
30	5975-1	Cable Tie (18# x 3-3/4")	1
31	5842-1	Washer (1.0IDx1.350OD)	1*

\*Used only on Model MD

F002	10-24 Keps Nut	4
F003	1/4-28 Hex Nut	4
F004	1/4-20 Keps Nut	5
F009	5/16-18 Whiz Locknut	6
F012	3/8-16 Keps Nut	1
F028	10-24 x 3/4 PPHMS	4
F029	1/4-20 x 1/2 Hex Bolt	4
F039	3/8-16 x 1-1/4 Hex Bolt	2
F049	5/16 SAE Washer	2
F050	1/4 SAE Washer	2
F068	1/8 x 1 Cotter Pin	1
F069	3/32 x 1/2 Cotter Pin	2
F085	3/16 Rivet Backup Washer	4
F093	5/16-18 x 1 Hex Bolt	2
F134	AN960816L Washer	3
F183	.312 x .700 x .074 Washer	2
F267	1/2 x 1 x 1/16 Washer	4
F337	1/4-20 x 5/8 Self-Tap Bolt	2

A,C

A



